

Crawford County Recorder
 Denise Meeves
Fee Book 2012-0088
 01/12/2012 @ 11:15AM
 PLC PLAT CORNER CER
 Book: Page: \$7.00 # Pages: 1
 Total Fees:

INDEXED 0009
 FILED UP
 FILED
 SERIALIZED

Prepared by: Nathan H. Carlson Address: 3701 12th Street N, Suite 206, Phone: 320-253-9495
St. Cloud, MN 56303

UNITED STATES PUBLIC LAND SURVEY CORNER CERTIFICATE FOR

Land survey monuments situated in Section 17, Township 85N
Range 39W, of the Fifth Principal Meridian, Crawford County, Iowa.

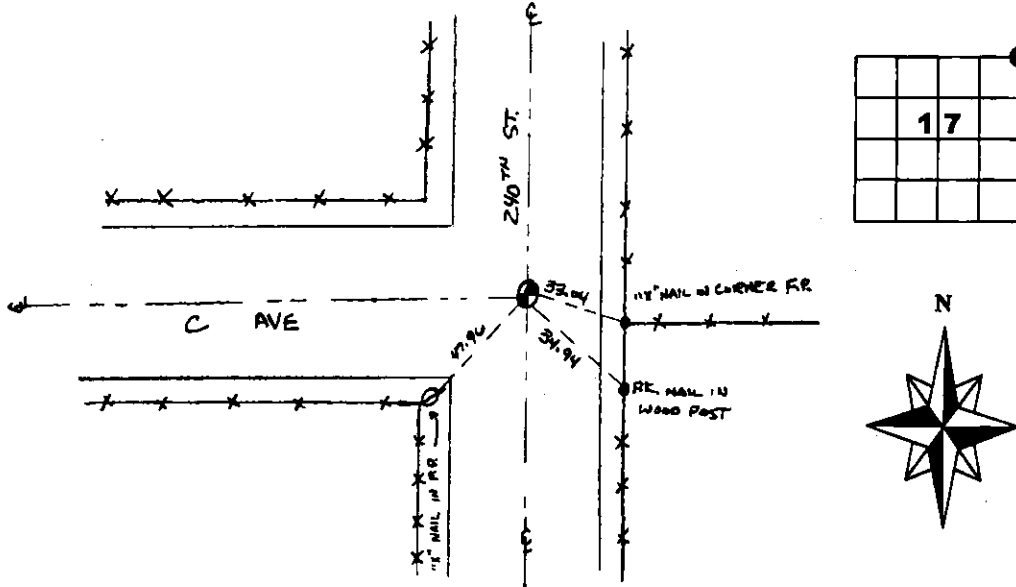
Previously recorded in _____ in County Recorder's Office.

(Show reason for preparing this certificate, the evidence and detailed procedures used in establishing the corner positions & monumentation found or placed.)

MONUMENT DESCRIPTION AND REMARKS: Notes from Westwood Professional Services, Inc. in 2006 indicate that 5'x10' by 3.5' deep hole was excavated and a monument in broken concrete was found. A 3/8" rebar with LS Cap 13721 was placed above the concrete monument. In November of 2011 I searched the area and found a 3/8" rebar with LS cap 13721 in the centerline of the road 3 feet north of a fence line to the east. Accepted monument as marking the corner position and established reference ties as noted below.

PLAN - VIEW

(Show a minimum of three reference ties to durable physical objects, relevant monuments and physical conditions that will enable recovery of the corner.)



SLSI-3/98

I hereby certify that this land surveying document was prepared and the related survey work was performed by me or under my direct personal supervision and that I am a duly licensed Land Surveyor under the laws of the State of Iowa.

Nathan H. Carlson 1/4/2012
 Signature Date

Typed/Printed Name: Nathan H. Carlson
 License Number: 19314
 My license renewal date is December 31, 2012
 Pages or sheets covered by this seal: This sheet

Corners to be Indexed

Corners	Section	Twp.	Range
NE	17	85N	39W