

Instrument #: 2013-2824
11/20/2013 02:20:08 PM Total Pages: 1
PLC PLAT CORNER CEN
Recording Fee: \$7.00 Transfer Tax: \$0
Denise Reeves, Recorder, Crawford County Iowa



PREPARED BY - JOSEPH P. RUESCHENBERG - SUNDQUIST ENGINEERING - 120 S. MAIN, DENISON, IOWA 51442 - PHONE (712) 263-8118

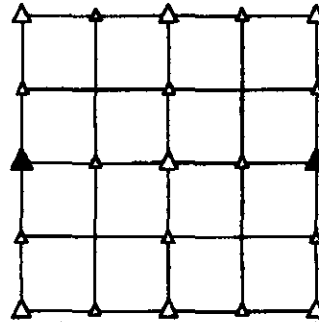
UNITED STATES PUBLIC LAND SURVEY CORNER CERTIFICATE OF

LAND SURVEY MONUMENT SITUATED IN SECTION 7, T 85 N, R 38 W OF
THE 5TH P.M., CRAWFORD COUNTY, IOWA.
PREVIOUSLY RECORDED IN BOOK _____, PAGE _____, OTHER _____

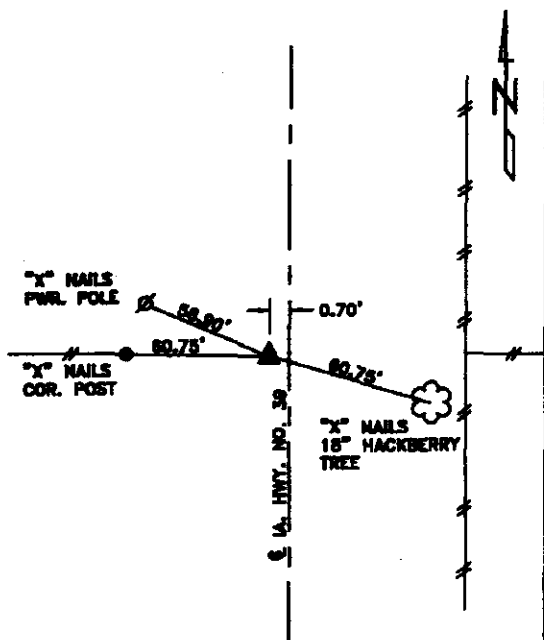
MONUMENT DESCRIPTION AND REMARKS

W1/4 CORNER - FOUND PK NAIL.

E1/4 CORNER - FOUND CM 18" DEEP WITH IRON PIN ON SO. SIDE.

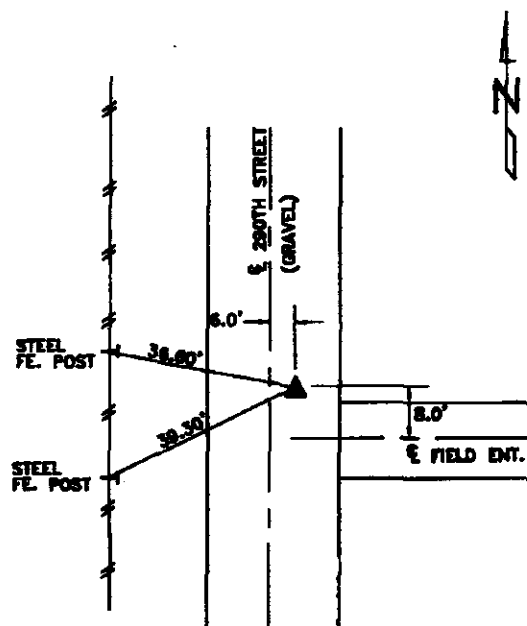


PLAN VIEW SHOWING RELATIVE LOCATION OF MONUMENT AND REFERENCE POINTS.



DISTANCES PLUMB CHAINED

W1/4 CORNER SECTION 7-85-38

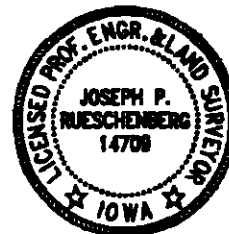


DISTANCES PLUMB CHAINED

E1/4 CORNER SECTION 7-85-38

I HEREBY CERTIFY THAT THIS LAND SURVEYING DOCUMENT WAS PREPARED AND THE RELATED SURVEY WORK WAS PERFORMED BY ME OR UNDER MY DIRECT PERSONAL SUPERVISION AND THAT I AM A DULY LICENSED LAND SURVEYOR UNDER THE LAWS OF THE STATE OF IOWA.

Joseph P. Rueschenberg 11-8-2013
JOSEPH P. RUESCHENBERG DATE
IA LICENSE NO. 14709 EXP. DATE DECEMBER 31, 2014



SE PROJECT NO. 23413
DRAWN BY: JLL