

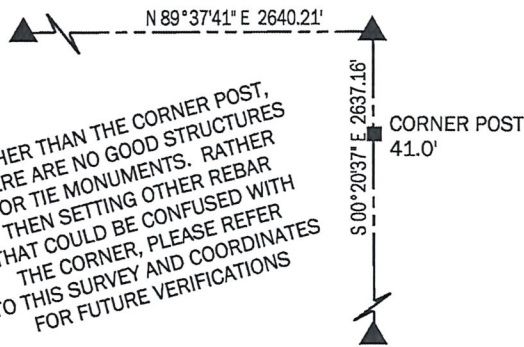
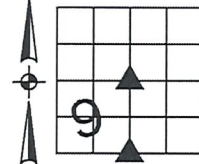
PREPARED BY AND RETURN TO: MIKE SCHULTE, SCHULTE SURVEYING, INC., 2003 390TH STREET, WESTSIDE, IA 51467 (712) 790-3489

UNITED STATES PUBLIC LAND SURVEY CORNER CERTIFICATE OF

LAND SURVEY MONUMENTS SITUATED IN SECTION 9, TOWNSHIP 82 NORTH, RANGE 38 WEST, OF THE FIFTH PRINCIPAL MERIDIAN, CRAWFORD COUNTY, IOWA. PREVIOUSLY RECORDED IN SEE BELOW IN COUNTY RECORDER'S OFFICE.
(book, page instrument number)

CENTER OF SECTION

FND 1/2" REBAR WITH UNREADABLE YPC
 NORTHING EASTING ELEV
 7212191.00 16624328.54 1400.4



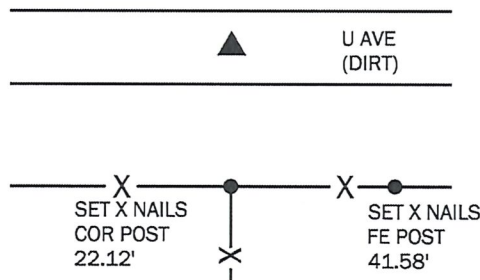
NO RECORDED TIES OR ENGINEER'S TIES FOUND. SURVEY 99-1643 SHOWS A 1/2" REBAR WITH YPC 12534 AS SET. USED SURVEY AND FOUND A 1/2" REBAR WITH UNREADABLE CAP 2" ABOVE GROUND. MONUMENT IS 41' NORTH OF AN OCCUPIED FENCE. REVIEWED PREVIOUS SURVEY (DISTANCES NORTH & SOUTH) AND OWNERSHIP/ CONSTRUCTION TIME LINE OF FENCE WEST OF HERE AND ACCEPTED MONUMENT.

SOUTH 1/4 CORNER

FOUND BROKEN CONCRETE MONUMENT 2' DEEP
 SET 5/8" x 1' REBAR WITH YPC 17979 4" DEEP
 NORTHING EASTING ELEV
 7209553.88 16624344.35 1488.8



NO RECORDED TIES FOUND. COUNTY ENGINEER'S TIES SHOW A BROKEN C.M. 3' DEEP IN 1988. SURVEY IN 1999 SHOW A SET 1/2" REBAR. SEARCHED FOR REBAR BUT COULD NOT FIND IT. ROAD LOOKS LIKE IT HAS WASHED A LITTLE, LOOSING THE REBAR. USED BACKHOE AND FOUND A BROKEN C.M. 2' DEEP. LOCATED MONUMENT, BACKFILLED, AND SET A 1' X 5/8" REBAR WITH YPC 17979 4" DEEP.



*All distances are measured horizontally unless noted.

LIST CORNERS TO BE INDEXED

CORNER	SECTION	TWP	RANGE
CENTER SEC	9	82	38
S1/4 COR	9	82	38
N1/4 COR	16	82	38

I HEREBY CERTIFY THAT THIS LAND SURVEYING DOCUMENT WAS PREPARED BY ME OR UNDER MY DIRECT PERSONAL SUPERVISION AND THAT I AM A DULY LICENSED PROFESSIONAL LAND SURVEYOR UNDER THE LAWS OF THE STATE OF IOWA.

Mike Schulte
 MIKE SCHULTE
 2019/05/28
 DATE
 LICENSE NUMBER: 17979
 LICENSE RENEWAL DATE IS DECEMBER 31, 2019
 PAGES COVERED BY THIS SEAL: 1 OF 1



BASIS OF BEARING
 IaRCS ZONE 6 - US SURVEY FEET
 IaRTN DERIVED - NAD83(2011)(EPOCH 2010.00)