

INDEXED XXX  
FOLLOW UP \_\_\_\_\_  
PROOFED \_\_\_\_\_  
SCANNED \_\_\_\_\_

Instrument #: 2018-1938  
09/19/2018 08:27:33 AM Total Pages: 1  
PLC PLAT CORNER CER  
Recording Fee: \$0.00 Transfer Tax: \$0  
Denise Meeves, Recorder, Crawford County Iowa



PREPARED BY: PAUL ASSMAN-CRAWFORD COUNTY ENGINEER'S OFFICE-COURTHOUSE-DENISON, IA.-712-263-2449

## UNITED STATES PUBLIC LAND SURVEY CORNER CERTIFICATE OF

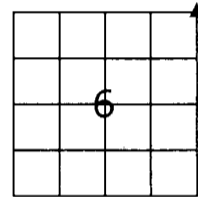
LAND SURVEY MONUMENT SITUATED IN NISHNABOTNA TOWNSHIP, THE NORTHEAST CORNER OF SECTION 6,  
T-82N, R-38W OF THE FIFTH P.M. CRAWFORD COUNTY, IOWA.

PREVIOUSLY RECORDED AS NO. 2005-2654

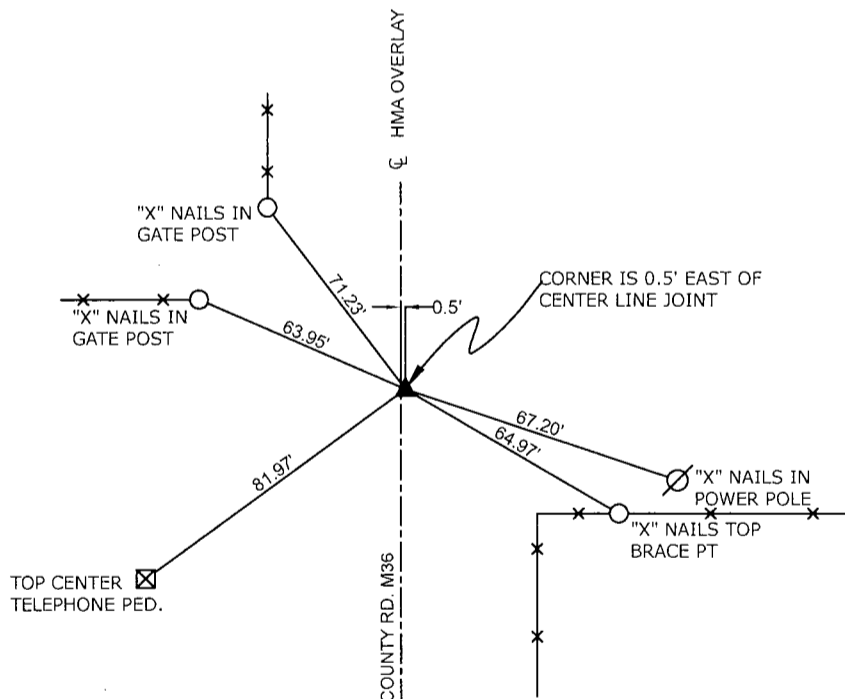
### MONUMENT DESCRIPTION AND REMARKS

NORTH EAST CORNER SEC. 6-82-38

FOUND 3/4" IRON PIN AT SURFACE IN ACCORDANCE WITH  
PREVIOUS TIES. COUNTY COMPLETED HMA OVERLAY,  
PROJECT NO. FM-TSF-C024(115). SET 1/2" CARRIAGE  
BOLT AT SURFACE AND RETIED CORNER.



NORTHEAST CORNER SEC. 6-82-38



ALL DISTANCES ARE SLOPE CHAINED

#### CERTIFICATION:

I HEREBY CERTIFY THAT THIS LAND SURVEYING DOCUMENT WAS PREPARED AND THE RELATED SURVEY  
WORK WAS PERFORMED BY ME OR UNDER MY DIRECT PERSONAL SUPERVISION AND THAT I AM A DULY  
LICENSED LAND SURVEYOR UNDER THE LAWS OF THE STATE OF IOWA.

Paul J. Assman  
Signature Date of Survey 7/31/18

PAUL J. ASSMAN 11982 12-31-18  
Typed Name L.S. No. License Renewal Date

Pages covered by this seal 1

