

54

Checked N&S & set on fence West
& Willows East

Ties to x nails

78.6 East from oak post

24.3 West from fence line

30.8 NW from brace post

58.4 SW " Cor post

60.5 SW " REA Pole

32

5 Sought in middle of right of way
in range with fence from NTS

Found two lath 6" long at a depth
of 3" and 1/2" iron stake 18" long
at a depth of 1' Lowered and Set C.M.

Ties from X SPIKES in Cor Posts

34.6 N from Cor. Post

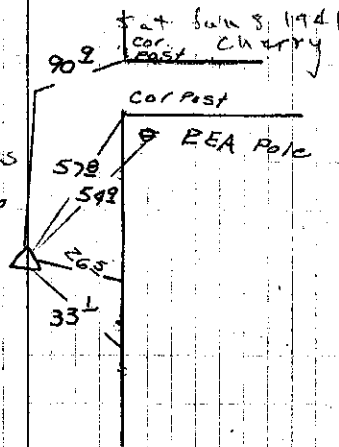
32.7 S " " " "

11

Found C.M. 24" deep

11-17-81 Berndt-Keairnes

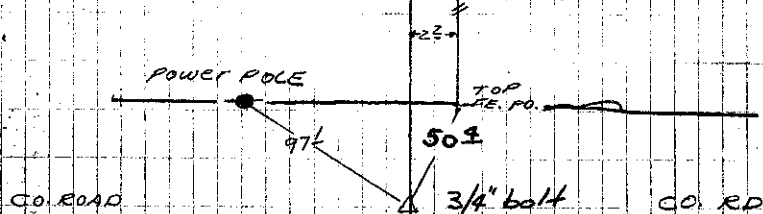
Set 1" Re-bar 1' deep



2-65

Found 4-3-39

4-10-62 Richards



SET 1" x 36" IRON ROD
4" deep FROM INST. TIES
OVER GOVT. MONU.
OCT. 15, 1963
RICHARDS, CLAREY
CUE, KRUSE

Set Iron Pin
7-8-65

3/28/66 Set 3/4"

round steel bolt

flush Keairnes, Berndt