

20
11/17/2010
11/17/2010

Crawford County Recorder
Denise Meeves
Fee Book 2010-2534
11/17/2010 @ 12:02 PM
PLC PLAT CORNER CER
Book: Page: # Pages: 1
Total Fees: \$0.00

PREPARED BY: MICKAEL F. BERNDT - CRAWFORD COUNTY ENGINEER'S OFFICE - COURTHOUSE - DENISON, IA. - 712-263-2449

**UNITED STATES PUBLIC LAND SURVEY CORNER CERTIFICATE
OF**

**LAND SURVEY MONUMENT SITUATED IN NISHNABOTNA TOWNSHIP, THE W1/4 CORNER
OF SECTION 35, T-82N, R-38W OF THE FIFTH P.M. CRAWFORD COUNTY, IOWA.**

PREVIOUSLY RECORDED AS:

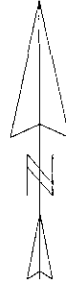
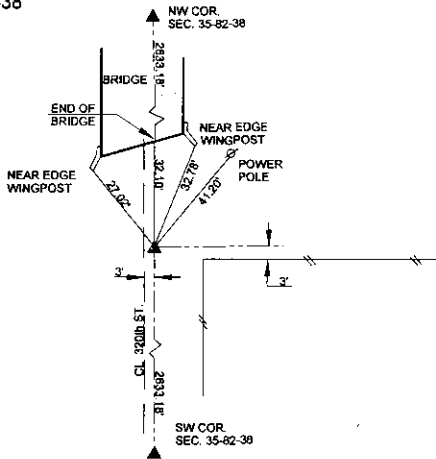
MONUMENT DESCRIPTION AND REMARKS

W1/4 COR. OF SEC. 35-82-38

DATE: 11/8/10

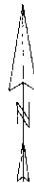
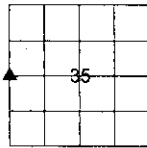
ACCORDING TO THE NISHNABOTNA CORNER BOOK PAGE 69 LOCATED IN THE ENGINEERS OFFICE NO CONCRETE MONUMENT WAS SET AT THIS LOCATION. THE NW AND THE SW CORNERS WERE BOTH FOUND AND THE CORNER WAS ESTABLISHED ON LINE AND AT THE SPLIT OF THE DISTANCE BETWEEN THE TWO CORNERS. A 5/8" X 14" REBAR W/ YELLOW CAP #14808 WAS SET 0.4' DEEP.

W1/4 COR. OF SEC. 35-82-38



ALL DISTANCES ARE SLOPED CHAINED
ALL TIES ARE "X" NAILS UNLESS NOTED.

CORNER: W1/4 COR.
SECTION: 35
TOWNSHIP: 82N
RANGE: 38W



CERTIFICATION:

I HEREBY CERTIFY THAT THIS LAND SURVEYING DOCUMENT WAS PREPARED AND THE RELATED SURVEY WORK WAS PERFORMED BY ME OR UNDER MY DIRECT PERSONAL SUPERVISION AND THAT I AM A DULY LICENSED LAND SURVEYOR UNDER THE LAWS OF THE STATE OF IOWA.

Mickael F. Berndt 11-17-10
Signature Date of Survey

MICKAEL F. BERNDT 14808 Dec. 31, 2010
Typed Name L.S. No. License Renewal Date

