

FILED DENISON, IOWA
 CRAWFORD COUNTY
 2003 AUG -5 PH 3:51
 2003-3019
 DENISE MEEVES
 MARY GIBSON, DEPUTY

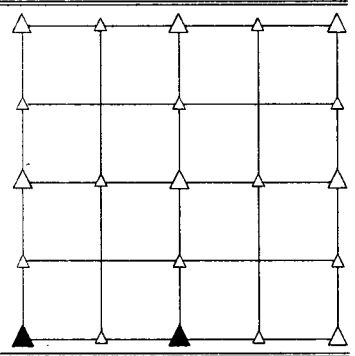
PREPARED BY - TERENCE E. CRAWFORD - SUNDQUIST ENGINEERING - 120 S. MAIN, DENISON, IOWA 51442 - PHONE (712) 263-8118

UNITED STATES PUBLIC LAND SURVEY CORNER CERTIFICATE OF

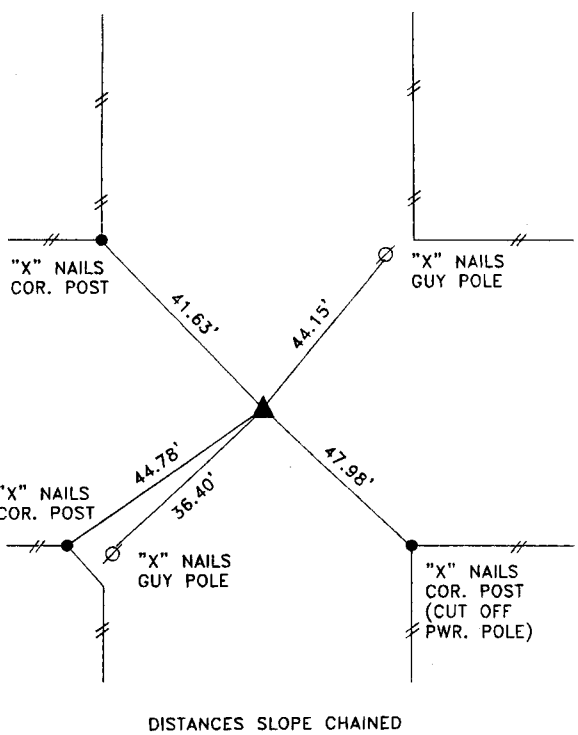
LAND SURVEY MONUMENT SITUATED IN SECTION 28, T 82 N, R 38 W OF
 THE 5TH P.M., CRAWFORD COUNTY, IOWA.
 PREVIOUSLY RECORDED IN BOOK _____, PAGE _____, OTHER _____

MONUMENT DESCRIPTION AND REMARKS

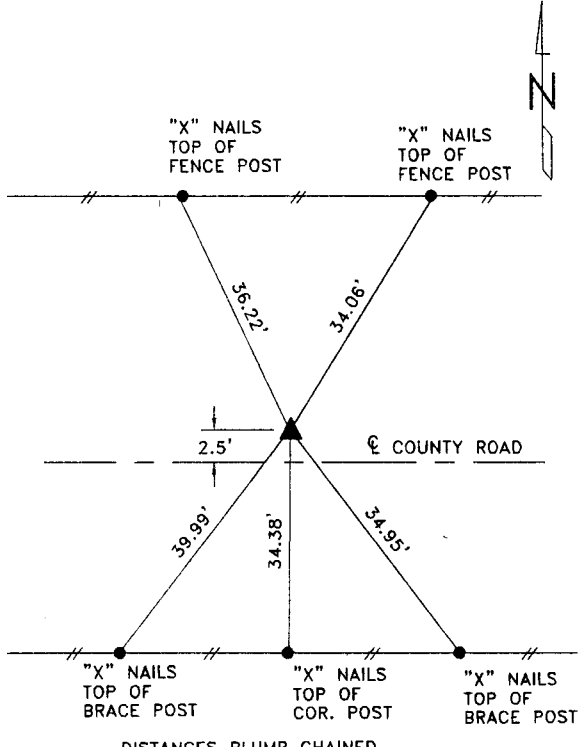
SW CORNER - FOUND 1/2" BOLT 12" DEEP.
 S1/4 CORNER - THIS CORNER WAS NOT PREVIOUSLY SET, SET 5/8" DIA. X 18" IRON PIN W/YELLOW CAP #8893, 5" DEEP, SET FROM LOCAL EVIDENCE & CHECKED DISTANCES BETWEEN SW COR. AND SE COR. OF SECTION 28.



PLAN VIEW SHOWING RELATIVE LOCATION OF MONUMENT AND REFERENCE POINTS.



DISTANCES SLOPE CHAINED
 SW CORNER SECTION 28-82-38

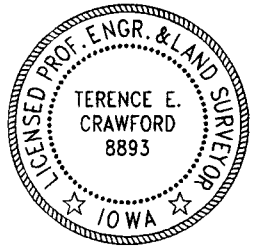


DISTANCES PLUMB CHAINED
 S1/4 CORNER SECTION 28-82-38

I HEREBY CERTIFY THAT THIS LAND SURVEYING DOCUMENT WAS PREPARED AND THE RELATED SURVEY WORK WAS PERFORMED BY ME OR UNDER MY DIRECT SUPERVISION AND THAT I AM A DULY LICENSED LAND SURVEYOR UNDER THE LAWS OF THE STATE OF IOWA.

Terence E. Crawford
 TERENCE E. CRAWFORD
 IA LICENSE NO. 8893

AUG 01 2003
 DATE
 EXP. DATE DECEMBER 31, 2003



SE PROJECT NO. 24003
 DRAWN BY: LLL