

32.83

Dug 2 1/2 ft and side of road
from C.M. & SE. corner of sec
32, 2. per top chain of road
No. 1. 1/2 inches from either
direction. No find
7-29-05 DUG 12' W X 25' X 5.5' DEEP
NO FIND BARNUM

29
32

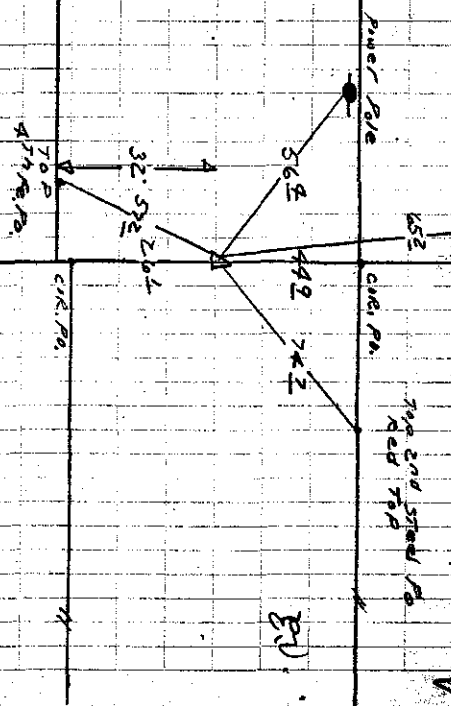
Found 1 rock 12" X 14" X 18" at a depth of
6" 1/4" X 28" X 30" at a depth of 24"
Lowered and set C.M.

Ties

36.8 SE from 1st Post W
46.2 S " " 6" Box Elder
33.8 S " " Car Post
24.4 N " " " "

5-14-41
Bernard E. M. G. C
65

12" BARNUM
18-20-1
33 FOUND 10-19-39



Found MONU. 4' deep
& raised to surface
10-3-03 by Richards

Sandy clayey
Gravel
C.M.