

INDEX SM  
 SCAN \_\_\_\_\_  
 FOLLOW UP \_\_\_\_\_  
 PROOF \_\_\_\_\_

Instrument #: 2022-1950  
 08/12/2022 11:49:18 AM Total Pages: 1  
 PLC PLAT COR CERT  
 Recording Fee: \$7.00 Transfer Tax: \$0  
 Denise Meeves, Recorder, Crawford County Iowa



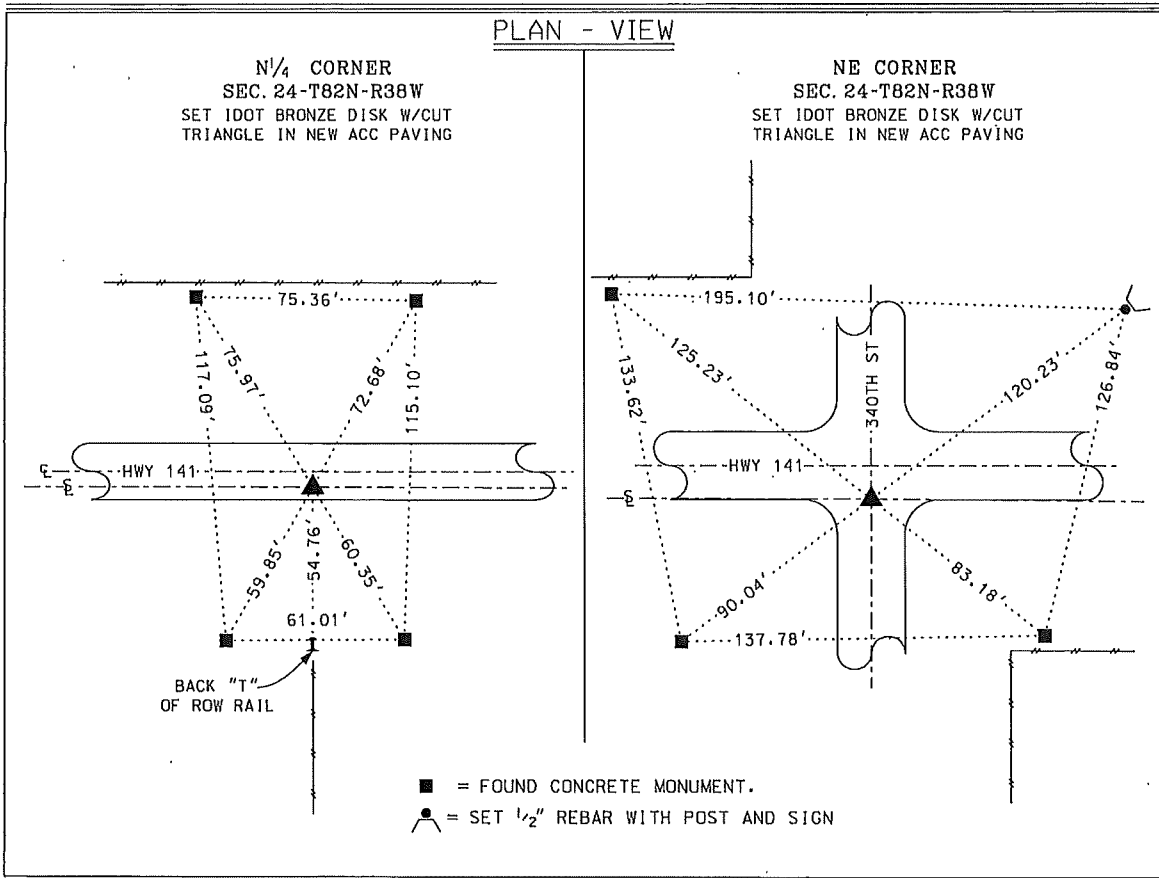
PREPARED BY - JAMES C. SAILER - IDOT, P.O.B. 987, SIOUX CITY IOWA 51102-0987 PHONE (712) 276-1451



UNITED STATES PUBLIC LAND SURVEY CORNER CERTIFICATE  
 Of Land Survey Monument Situated in Section 24,  
 Township 82 NORTH, Range 38 WEST Of The Fifth Principal Meridian,  
 CRAWFORD County, Iowa. Previously Recorded In \_\_\_\_\_

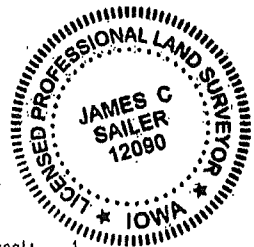
NE CORNER 97-1048 In The County Recorders Office.  
Monument Description and Remarks:

N<sup>1</sup>/<sub>4</sub> CORNER, SEC 24-T82N-R38W - FOUND 3/4" PIPE IN ACC PAVING PRIOR TO CONSTRUCTION. SET IDOT BRONZE DISK W/CUT TRIANGLE IN NEW ACC PAVING.  
 NE CORNER, SEC 24-T82N-R38W - FOUND 3/4" PIPE IN ACC PAVING PRIOR TO CONSTRUCTION. SET IDOT BRONZE DISK W/CUT TRIANGLE IN NEW ACC PAVING.



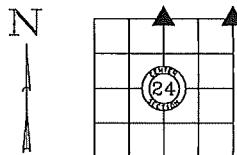
I hereby certify that this land surveying document was prepared and the related survey work was performed by me or under my direct personal supervision and that I am a duly licensed Professional Land Surveyor under the Laws of the State of Iowa.

Signature: James C. Sailer Date: 8/4/22  
 James C. Sailer - Lisc. No. 12090



My License Renewal Date is December 31, 2022  
 Pages or sheets covered by this seal: 1

IOWA DEPARTMENT OF TRANSPORTATION  
 CRAWFORD COUNTY FIELD BOOK 14, PAGE 51-52  
 CERTIFICATE NUMBER 24-24



DATE: 07/25/2022 - BY: WRS

Corner to be Indexed			
Corner	Section	Twp	Range
N <sup>1</sup> / <sub>4</sub> CORNER	24	T82N	R38W
NE CORNER			