

23-24

Found 2 Cog Wheels, Heavy Iron Pin 8" long
Small Lime Stone 4" x 4" x 4" at a depth
of 16" Lowered and Set C.M.

Ties (Old ties)
27.9 E. from Steel for Post
36.5 E.N.E. in N. evergreen of low
47.2 N.E. in tele pole
51.0 S.W. in high tension pole
32.6 W. in Cor. Post

14
23

Found lead plug in pavement
took bearings & recorded

Reft. Iowa state Highway Comm.

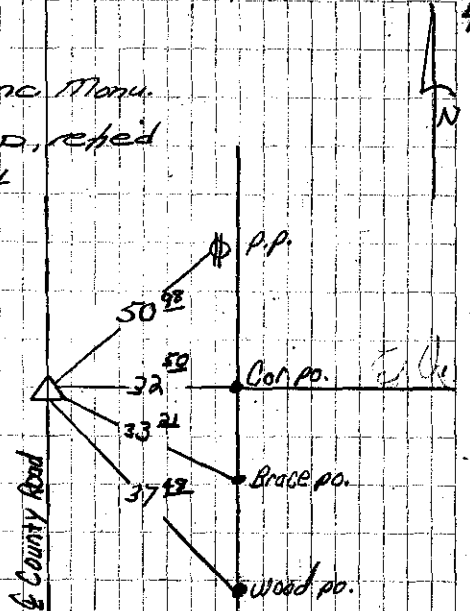
20.2 NW of far sta #295
89.2 NE of far sta #294
73.9 N of RR. iron
57.7 S of Cor. post
94.9 SE of center of windmill platform

Found 6-1-40

29-14-1
1012/BS Found Conc. Manu.
broken off 8" deep, refted
Keairnes Berndt

Found 5" x 6" x 13" limestone
37" Deep. Reset Broken
S.C.M. Above

Tied from Sec. Cor.
Oct. 8-26-94



Found 5-6-42
Chert - Champion

