

STATE OF IOWA
CRAWFORD COUNTY

2002 JAN 17 AM 8:15

INST. NO. 2002-0213
DENISE NEEVES, RECORDER

Denise Neeves
FEE no fee

INDEXED
FOLLOW UP
FILED

PREPARED BY: MICKAEL BERNDT
CRAWFORD COUNTY ENGINEERS OFFICE - COURTHOUSE - DENISON, IA. - 712-263-2449

UNITED STATES PUBLIC LAND SURVEY CORNER CERTIFICATE OF

LAND SURVEY MONUMENT SITUATED IN NISHNABOTNA TOWNSHIP THE EAST 1/4
CORNER SECTION 18, T-82N, R-38 W OF THE 5TH P.M. CRAWFORD COUNTY, IOWA.

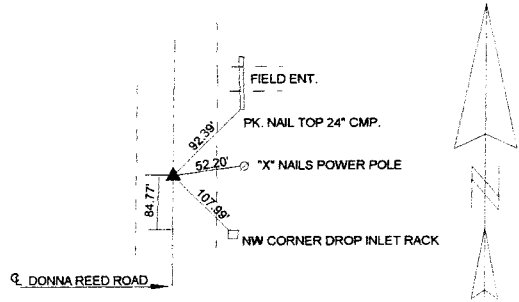
PREVIOUSLY RECORDED IN BOOK N/A , PAGE , OTHER

MONUMENT DESCRIPTION AND REMARKS

EAST 1/4 CORNER SEC. 18-82-38

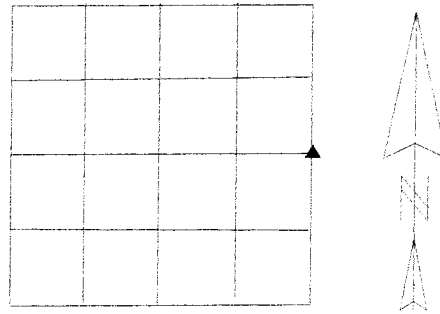
Crawford County graded three miles under Project No. FM-CO24(53)--55-24. The above mentioned corner was located on this project. It was instrument tied off before the project was started and set back after the project was completed. Approximately 12' of fill was placed over the existing corner.

EAST 1/4 CORNER SEC. 18-82-38
SET 5/8" X 14" REBAR
YELLOW CAP #14808
8" DEEP



ALL DISTANCES ARE PLUMB CHAINED

CORNER: E1/4
SECTION: 18
TOWNSHIP: 82N
RANGE: 38W



I HEREBY CERTIFY THAT THIS LAND SURVEYING DOCUMENT WAS PREPARED
AND THE RELATED SURVEY WORK WAS PERFORMED BY ME OR UNDER MY
DIRECT PERSONAL SUPERVISION AND THAT I AM A DULY LICENSED LAND
SURVEYOR UNDER THE LAWS OF THE STATE OF IOWA.

Mickael F. Berndt 1-17-02

MICKAEL F. BERNDT

DATE

IA. LICENSE NO. 14808

EXP. DATE 12-31-02

