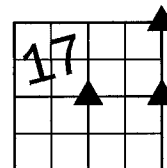


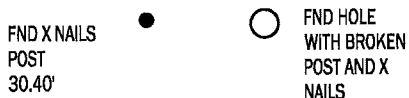
Denise Meeves RECORDER
 Crawford County, Iowa
 Instr. Number: 2017-0908
 Recorded: 5/5/2017 at 8:24:09.0 AM
 Pages 1
 Fee Amount: \$7.00
 Revenue Tax:

PREPARED BY AND RETURN TO: MIKE SCHULTE, SCHULTE SURVEYING, INC., 2003 390TH STREET, WESTSIDE, IA 51467 (712) 790-3489

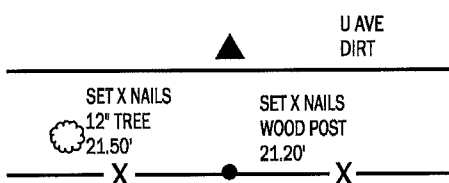
UNITED STATES PUBLIC LAND SURVEY CORNER CERTIFICATE OF
 LAND SURVEY MONUMENTS SITUATED IN SECTION 17, TOWNSHIP 82 NORTH, RANGE 38 WEST, OF THE FIFTH
 PRINCIPAL MERIDIAN, CRAWFORD COUNTY, IOWA. PREVIOUSLY RECORDED IN SEE BELOW
 IN COUNTY RECORDER'S OFFICE. (book, page instrument number)



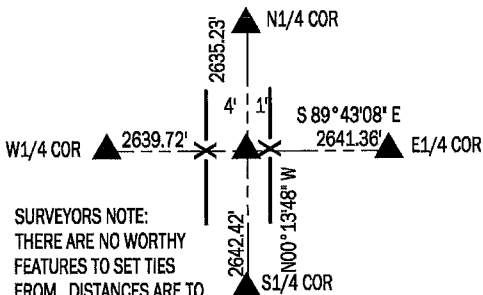
NE CORNER
 FND BROKEN C.M.
 N: 7209552.08 E: 16621711.43 EL: 1494.3



ONLY ENGINEER'S TIES WERE FOUND. C.M. ORIG SET IN 1941, MONUMENT WAS RETIED AND LOWERED IN 1988, ASSUMING A RE-GRADING OF ROAD. CURRENTLY THE ROAD IS LYING LOW COMPARED TO DITCHES AND WASHED OUT. FOUND PIECES ON CONCRETE ON TOP OF THE ROAD GRADE. FOUND X NAILS IN A POST, ROLLED OVER A BROKEN POST AND SAW X NAILS AND A HOLE. USED EDGE OF HOLE AND X NAILS TO SWING AN ARC AND PROBED. FOUND BROKEN C.M. 6" DEEP. SET MAG NAIL IN TOP AND METAL NEXT TO, FOR LOCATING. RETIED CORNER BECAUSE THERE IS NO CURRENT TIES OF RECORD.



CENTER OF SECTION
 SET 5/8" REBAR YPC 17979
 N: 7206918.07 E: 16619090.49

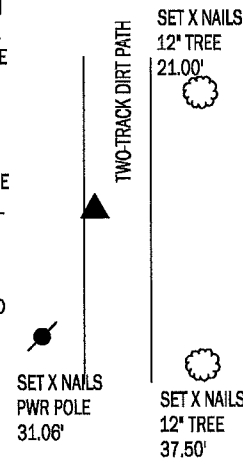


SURVEYORS NOTE:
 THERE ARE NO WORTHY FEATURES TO SET TIES FROM. DISTANCES ARE TO SURROUNDING SEC CORS. NOTE COORDINATE ABOVE.

NO RECORDS FOR A CENTER OF SECTION WERE FOUND. FENCES AND OWNERSHIP INDICATE IT MAY NOT HAVE EVER BEEN SET. CALCULATED AN INTERSECTION AND REVIEWED. FIT OCCUPATION LINES WELL, SET 5/8" REBAR WITH YPC 17979.

EAST 1/4 COR
 SET 5/8" REBAR YPC 17979
 N: 7206905.11 E: 16621731.82

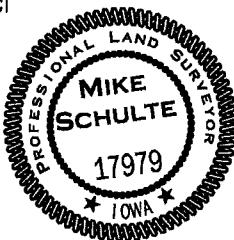
ENGINEERS TIES NOTE THAT A C.M. WAS SET IN 1940. TIES ARE TO FENCES AND INDICATE THE C.M. WAS SET BY FENCE INTERSECTION. THERE IS A FENCE LOCATED EAST OF THE TWO-TRACK PATH, BUT AFTER A THOUGHAL INVESTIGATION, IT WAS CONCLUDED BY MYSELF AND LANDOWNER THAT THE CURRENT FENCING IS NOT AS IT WAS IN 1940. THE EAST WEST FENCE IS ALSO OBLITERATED. WITHOUT ANY ORIGINAL FEATURES IT WAS CONCLUDED THE CORNER WAS LOST AND SET BY SINGLE PROPORTION. THIS STRAIGHT LINE FITS LAND USAGE WELL. SET 5/8" REBAR WITH YPC 17979 8" DEEP AND TIED CORNER.



*All distances are measured horizontally unless noted.

I HEREBY CERTIFY THAT THIS LAND SURVEYING DOCUMENT WAS PREPARED BY ME OR UNDER MY DIRECT PERSONAL SUPERVISION AND THAT I AM A DULY LICENSED PROFESSIONAL LAND SURVEYOR UNDER THE LAWS OF THE STATE OF IOWA.

Mike Schulte
 MIKE SCHULTE
 LICENSE NUMBER: 17979
 LICENSE RENEWAL DATE IS DECEMBER 31, 2017
 PAGES COVERED BY THIS SEAL: 1 OF 1



LIST CORNERS TO BE INDEXED

CORNER	SECTION	TWP	RANGE
EAST 1/4	17	82	38
CENTER SECTION	17	82	38
NE CORNER	17	82	38
WEST 1/4	16	82	38
NW CORNER	16	82	38
SW CORNER	9	82	38
SE CORNER	8	82	38

BASIS OF BEARING
 IaRCS ZONE 6 - US SURVEY FEET
 IaRTN DERIVED - NAD83(2011)(EPOCH 2010.00)

SCHULTE SURVEYING, INC.

DRAWN BY: MLS
 PROJ NUMBER: 17-020