

INDEXED MS  
 FOLLOW UP MS  
 PROOFED MS  
 SCANNED MS

This document prepared by : Semke & Associates - 712-792-2276  
 Micheal G. Semke, L.S. #10318 - 716 N. Crawford St. - Carroll, Iowa

UNITED STATES PUBLIC LAND SURVEY CORNER CERTIFICATE  
 OF

Land Survey Monuments situated in Section 15, Township 82 North, Range 38  
 West, of the Fifth Principal Meridian, Crawford County, Iowa.  
 Previously recorded in Book , Page in County Recorder's Office.

(Show reason for preparing this certificate, the evidence and detailed procedures used in establishing the corner positions and monumentation found or placed.)

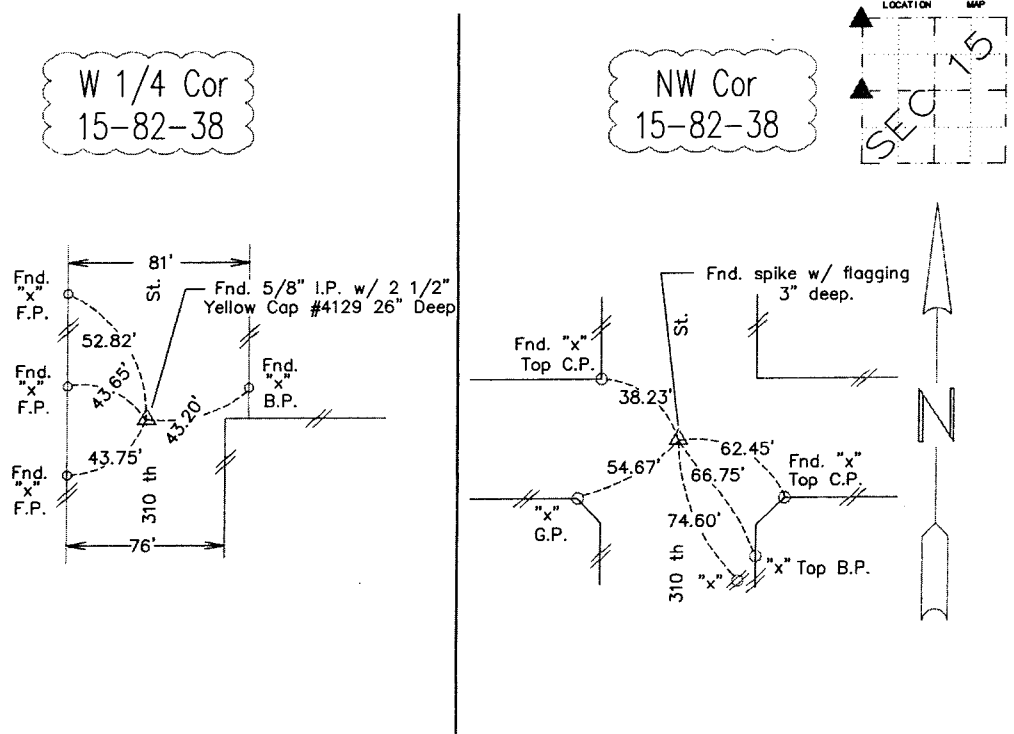
W 1/4 Corner Found 5/8" I.P. w/ 2 1/2" Yellow Cap  
 #4129 26" Deep (All Gravel to Pin)

NW Corner Found Spike w/ Flagging 3" Deep

Note: All pins set are 1/2" x 24" Rerod w/Yellow Cap #10318 unless noted otherwise.

PLAN - VIEW

(Show a minimum of three reference ties to durable physical objects, relevant monuments and physical conditions that will enable recovery of the corner.)



Note: all ties slope chained unless noted otherwise.

I HEREBY CERTIFY THAT THIS LAND SURVEYING DOCUMENT AND RELATED SURVEY WORK WAS PERFORMED BY ME OR UNDER MY DIRECT PERSONAL SUPERVISION AND THAT I AM A DULY LICENSED LAND SURVEYOR UNDER THE LAWS OF THE STATE OF IOWA.

*M. G. Semke* 6/21/4  
 Signature Date  
 Micheal G. Semke, L.S. No. 10318  
 Printed or Typed Name

Pages of sheets covered by this seal THIS PAGE My license is subject to renewal 12/31/05.

List Corners to be Indexed

Corners	Section	Twp	Range
W 1/4 Cor	15	82	38
E 1/4 Cor	16	82	38
NW Cor	15	82	38
NE Cor	16	82	38
SE Cor	9	82	38
SW Cor	10	82	38