

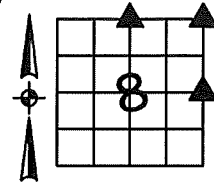
Sara Meseck, RECORDER
 Crawford County, Iowa
 Instr. Number: 2023-1925
 Recorded: 10/25/2023 at 1:24:12.0 PM
 Pages 1
 County Recording Fee: \$7.00
 Iowa E-Filing Fee: \$3.13
 Combined Fee: \$10.13
 Revenue Tax:

PREPARED BY AND RETURN TO: MIKE SCHULTE, SCHULTE SURVEYING, INC., 2003 390TH STREET, WESTSIDE, IA 51467 (712) 790-3489

UNITED STATES PUBLIC LAND SURVEY CORNER CERTIFICATE OF
 LAND SURVEY MONUMENTS SITUATED IN SECTION 08, TOWNSHIP 85 NORTH, RANGE 40 WEST, OF THE FIFTH
 PRINCIPAL MERIDIAN, CRAWFORD COUNTY, IOWA. PREVIOUSLY RECORDED IN SEE BELOW IN COUNTY
(book, page instrument number)
 RECORDER'S OFFICE.

N1/4 CORNER

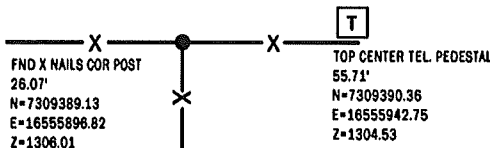
FND 5/8" REBAR YPC #8893 10" DEEP
 N=7309414.88 E=16555892.72 Z=1306.43
 USED CERTIFICATE RECORDED IN FEE BOOK 2006-1159 AND A METAL LOCATOR TO
 FIND A 5/8" REBAR YPC #8893 10" DEEP. VERIFIED WITH 3 REMAINING TIES.
 THIS CERTIFICATE IS BEING FILED TO UPDATE THE REFERENCE TIES.



FND "X" NAILS IN POWER POLE
 54.05'
 N=7309448.50
 E=16555850.40
 Z=1311.61



5' SOUTH CL ▲
**B AVE
 GRAVEL**



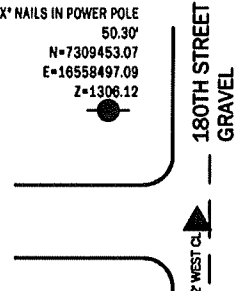
FND X NAILS COR POST
 26.07'
 N=7309389.13
 E=16555896.82
 Z=1306.01

TOP CENTER TEL. PEDESTAL
 55.71'
 N=7309390.36
 E=16555942.75
 Z=1304.53

NE CORNER

FND 1" ROD 15" DEEP, 2' WEST OF CL
 N=7309418.60 E=16558533.72 Z=1302.97
 USED CERTIFICATE RECORDED IN FEE BOOK 2006-1160 AND A
 METAL LOCATOR TO FIND A 1" ROD 15" DEEP 2' WEST OF ROAD
 CENTERLINE AS DESCRIBED. VERIFIED WITH 1 REMAINING TIE.
 THIS CERTIFICATE IS BEING FILED TO UPDATE THE REFERENCE TIES.

SET "X" NAILS IN POWER POLE
 50.30'
 N=7309453.07
 E=16558497.09
 Z=1306.12



FND "X" NAILS IN POWER POLE
 47.43'
 N=7309452.16
 E=16558567.24
 Z=1306.94

▲
**B AVENUE
 GRAVEL**

SET "X" NAILS IN LEVEL B SIGN
 75.30'
 N=7309400.41
 E=16558606.80
 Z=1304.18

ALL TIES ARE FND "X" NAILS TOP WOOD POST

40.26'
 N=7306807.30
 E=16558502.30
 Z=1364.86
 30.29
 N=7306788.79
 E=16558501.84
 Z=1365.48
 28.96
 N=7306772.13
 E=16558501.98
 Z=1365.95
 31.80'
 N=7306763.92
 E=16558501.93
 Z=1366.79
 44.03
 N=7306744.55
 E=16558502.04
 Z=1366.89



E1/4 CORNER

FND 5/8" REBAR YPC #8893
 N=7306778.35 E=16558530.27 Z=1360.51
 USED CERTIFICATE RECORDED IN FEE BOOK 2010-2829 AND A METAL
 LOCATOR TO FIND A 5/8" REBAR YPC #8893 AS DESCRIBED. VERIFIED
 WITH 5 REMAINING TIES.
 THIS CERTIFICATE IS BEING FILED TO UPDATE THE REFERENCE TIES.

LIST CORNERS TO BE INDEXED

CORNER	SECTION	TWP	RANGE
N1/4 CORNER	8	85	40
S1/4 CORNER	5	85	40
NE CORNER	8	85	40
SE CORNER	5	85	40
SW CORNER	4	85	40
NW CORNER	9	85	40
E1/4 CORNER	8	85	40
W1/4 CORNER	9	85	40

BASIS OF BEARING

16RCS ZONE 8 - US SURVEY FEET
 16RTN DERIVED - NAD83(2011)(EPOCH 2010.00)

I HEREBY CERTIFY THAT THIS LAND SURVEYING DOCUMENT WAS
 PREPARED BY ME OR UNDER MY DIRECT PERSONAL SUPERVISION AND
 THAT I AM A DULY LICENSED PROFESSIONAL LAND SURVEYOR UNDER
 THE LAWS OF THE STATE OF IOWA.

Mike Schulte

2023/10/25
 DATE

MIKE SCHULTE
 LICENSE NUMBER: 17979
 LICENSE RENEWAL DATE IS DECEMBER 31, 2023
 PAGES COVERED BY THIS SEAL: 1 OF 1



SCHULTE SURVEYING, INC.

DRAWN BY: MLS/SLG
 PROJ NUMBER: 23-092