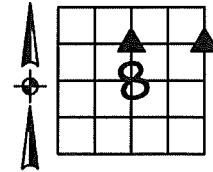


Sara Meseck, RECORDER  
 Crawford County, Iowa  
 Instr. Number: 2023-1926  
 Recorded: 10/25/2023 at 1:24:12.0 PM  
 Pages 1  
 County Recording Fee: \$7.00  
 Iowa E-Filing Fee: \$3.13  
 Combined Fee: \$10.13  
 Revenue Tax:

PREPARED BY AND RETURN TO: MIKE SCHULTE, SCHULTE SURVEYING, INC., 2003 390TH STREET, WESTSIDE, IA 51467 (712) 790-3489

**UNITED STATES PUBLIC LAND SURVEY CORNER CERTIFICATE OF**  
 LAND SURVEY MONUMENTS SITUATED IN SECTION 08, TOWNSHIP 85 NORTH, RANGE 40 WEST, OF THE FIFTH  
 PRINCIPAL MERIDIAN, CRAWFORD COUNTY, IOWA. PREVIOUSLY RECORDED IN SEE BELOW IN COUNTY  
(book, page instrument number)  
 RECORDER'S OFFICE.



**NW CORNER SW1/4 NE1/4**

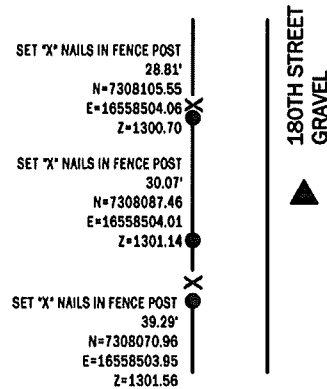
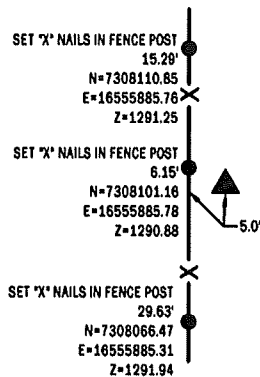
SET 5/8" REBAR YPC #17979  
 N=7308095.88 E=16555888.93

SEARCHED AREA, NOTHING FOUND. SET A 5/8" REBAR YPC #17979  
 BY SINGLE PROPORTION, 5' EAST OF FENCE LINE.  
 THIS CERTIFICATE IS BEING FILED DUE TO NONE OF RECORD.

**NE CORNER SE1/4 NE1/4**

SET 5/8" REBAR YPC #17979  
 N=7308098.48 E=16558532.00 Z=1300.35

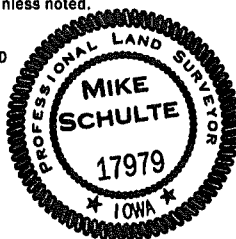
SEARCHED AREA, NOTHING FOUND. SET A 5/8" REBAR YPC #17979  
 3" DEEP BY SINGLE PROPORTION.  
 THIS CERTIFICATE IS BEING FILED DUE TO NONE OF RECORD.



\*All distances are measured horizontally unless noted.

I HEREBY CERTIFY THAT THIS LAND SURVEYING DOCUMENT WAS  
 PREPARED BY ME OR UNDER MY DIRECT PERSONAL SUPERVISION AND  
 THAT I AM A DULY LICENSED PROFESSIONAL LAND SURVEYOR UNDER  
 THE LAWS OF THE STATE OF IOWA.

*Mike Schulte*  
 MIKE SCHULTE  
 LICENSE NUMBER: 17979  
 LICENSE RENEWAL DATE IS DECEMBER 31, 2023  
 PAGES COVERED BY THIS SEAL: 1 OF 1



**LIST CORNERS TO BE INDEXED**

CORNER	SECTION	TWP	RANGE
NW CORNER SW1/4 NE1/4	8	85	40
NE CORNER SE1/4 NE1/4	8	85	40
NW CORNER SW1/4 NW1/4	9	85	40

**BASIS OF BEARING**

16RCS ZONE 6 - US SURVEY FEET  
 16RTN DERIVED - NAD83(2011)(EPOCH 2010.00)

**SCHULTE SURVEYING, INC.**

DRAWN BY: MLS/SLG  
 PROJ NUMBER: 23-092