



INDEXED
FOLLOW UP
PROOFED
SCANNED

Crawford County Recorder Denise Maeves
FEE BOOK 2004-2364 8/24/2004 @ 01:54PM
PIC PLAT CORNER CBRBook: Page:04-2364 #: 1
Total Fees: \$7.00

PREPARED BY - TERENCE E. CRAWFORD - SUNDQUIST ENGINEERING - 120 S. MAIN, DENISON, IOWA 51442 - PHONE (712) 263-8118

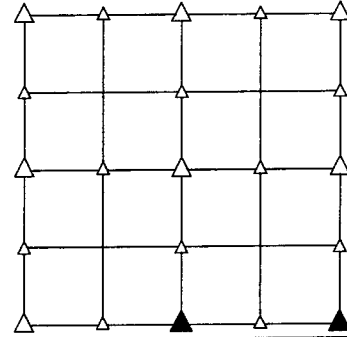
UNITED STATES PUBLIC LAND SURVEY CORNER CERTIFICATE OF

LAND SURVEY MONUMENT SITUATED IN SECTION 6, T 85 N, R 40 W OF THE 5TH P.M., CRAWFORD COUNTY, IOWA. PREVIOUSLY RECORDED IN BOOK _____, PAGE _____, OTHER _____

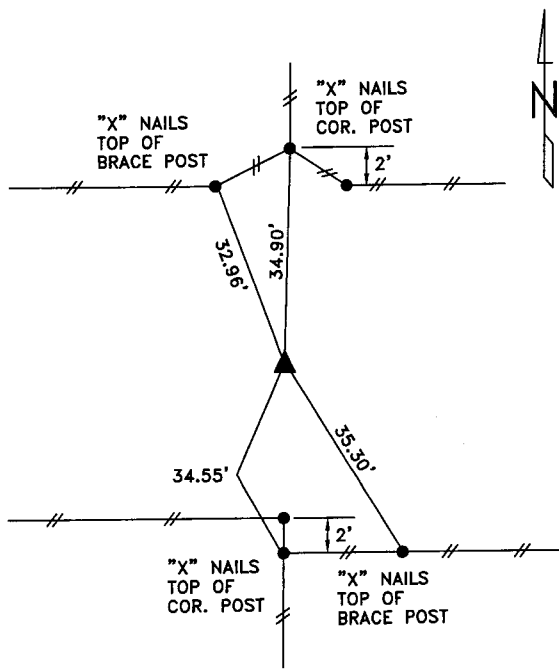
MONUMENT DESCRIPTION AND REMARKS

S1/4 CORNER - SET 5/8" DIA. X 18" IRON PIN W/YELLOW CAP #8893 0.4' DEEP, SET FROM PREVIOUS SURVEY INFORMATION.

SE CORNER - SET 5/8" DIA. X 18" IRON PIN W/YELLOW CAP #8893 0.4' DEEP, SET FROM PREVIOUS SURVEY INFORMATION & OLD TIES.

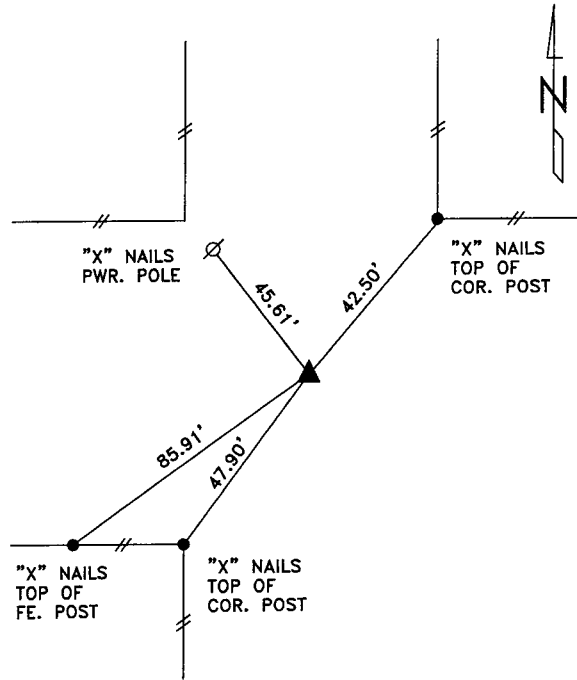


PLAN VIEW SHOWING RELATIVE LOCATION OF MONUMENT AND REFERENCE POINTS.



DISTANCES SLOPE CHAINED

S1/4 CORNER SECTION 6-85-40

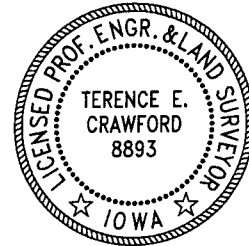


DISTANCES SLOPE CHAINED

SE CORNER SECTION 6-85-40

I HEREBY CERTIFY THAT THIS LAND SURVEYING DOCUMENT WAS PREPARED AND THE RELATED SURVEY WORK WAS PERFORMED BY ME OR UNDER MY DIRECT SUPERVISION AND THAT I AM A DULY LICENSED LAND SURVEYOR UNDER THE LAWS OF THE STATE OF IOWA.

Terence E. Crawford
TERENCE E. CRAWFORD
IA LICENSE NO. 8893
DATE
AUG 09 2004
EXP. DATE DECEMBER 31, 2005



SE PROJECT NO. 23104
DRAWN BY: LLL