

Crawford County Recorder
 Denise Meeves
Fee Book 2012-1218
 05/31/2012 @02:14PM
 PLC PLAT CORNER CER
 Book: Page: # Pages: 1
 Total Fees: \$0.00

AP 20

PREPARED BY: PAUL ASSMAN-CRAWFORD COUNTY ENGINEER'S OFFICE-COURTHOUSE-DENISON, IA.-712-263-2449

**UNITED STATES PUBLIC LAND SURVEY CORNER CERTIFICATE
 OF**

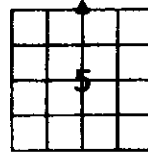
LAND SURVEY MONUMENT SITUATED IN MORGAN TOWNSHIP, THE NORTH 1/4 CORNER OF SECTION 5, T-85N,
 R-40W OF THE FIFTH P.M. CRAWFORD COUNTY, IOWA.

PREVIOUSLY RECORDED AS NO.

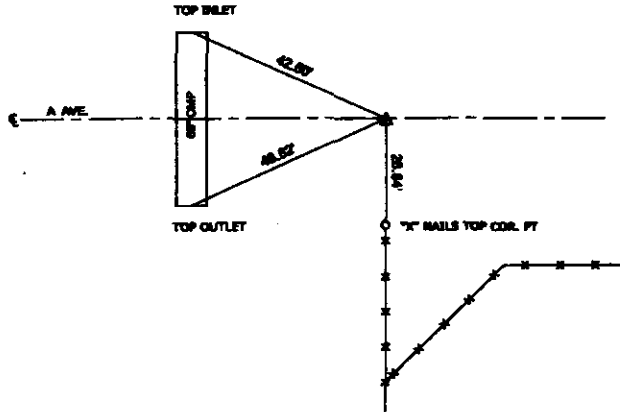
MONUMENT DESCRIPTION AND REMARKS

NORTH 1/4 CORNER SEC. 5-85-40

FOUND CONC. MONUMENT 6.0' BELOW SURFACE
 COUNTY GRADED ROAD AND SET 5/8" X 14" REBAR WITH
 RED CAP #11982 0.7' DEEP AND RETIED CORNER.



NORTH 1/4 CORNER SEC. 5-85-40



ALL DISTANCES ARE PLUMB CHAINED

<p>CERTIFICATION: I HEREBY CERTIFY THAT THIS LAND SURVEYING DOCUMENT WAS PREPARED AND THE RELATED SURVEY WORK WAS PERFORMED BY ME OR UNDER MY DIRECT PERSONAL SUPERVISION AND THAT I AM A DULY LICENSED LAND SURVEYOR UNDER THE LAWS OF THE STATE OF IOWA.</p>			
<p><i>Paul J. Assman</i> Signature</p>	<p>11/16/2011 Date of Survey</p>		
<p>PAUL J. ASSMAN Typed Name</p>	<p>11982 L.S. No.</p>	<p>12-31-12 License Renewal Date</p>	
<p>Pages covered by this cert. 1</p>			