


INDEXED                       
 FOLLOW UP                       
 RECORDED                       
 SEARCHED                     

00   
 Crawford County Recorder Denise Meeves  
 Fee Book 2007-0097 REC013118  
 01/10/2007 #1001AM # Pages 1  
 PLC PLAT CORNER CER  
 Total Fees: \$7.00

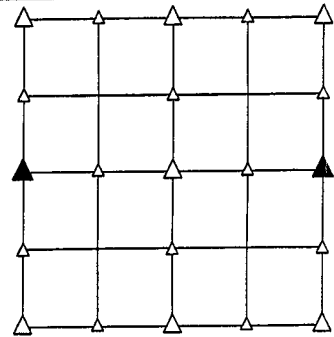
PREPARED BY - TERENCE E. CRAWFORD - SUNDQUIST ENGINEERING - 120 S. MAIN, DENISON, IOWA 51442 - PHONE (712) 263-8118

**UNITED STATES PUBLIC LAND SURVEY CORNER CERTIFICATE  
 OF**

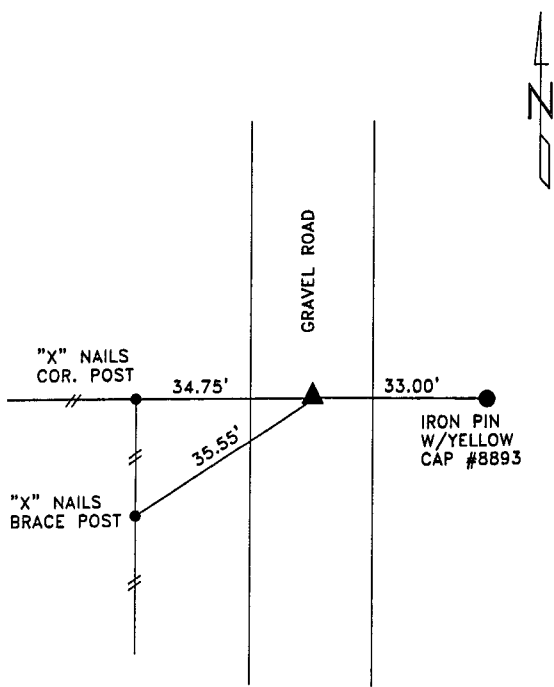
LAND SURVEY MONUMENT SITUATED IN SECTION 35, T 85 N, R 40 W OF  
 THE 5TH P.M., CRAWFORD COUNTY, IOWA.  
 PREVIOUSLY RECORDED IN BOOK                     , PAGE                     , OTHER                     

**MONUMENT DESCRIPTION AND REMARKS**

W1/4 CORNER - SET 5/8" DIA. X 18" IRON PIN W/YELLOW CAP #8893 0.4' DEEP, SET ON LINE BETWEEN NW COR. & SW COR. OF SECTION 35 & IN LINE W/FENCE LINE WEST.  
 E1/4 CORNER - FOUND PIPE W/CAP #13721 0.5' DEEP.

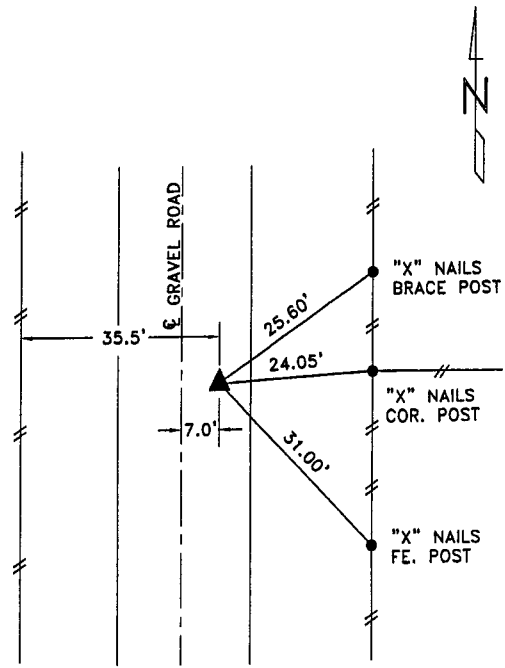


**PLAN VIEW SHOWING RELATIVE LOCATION OF MONUMENT AND REFERENCE POINTS.**



DISTANCES PLUMB CHAINED

W1/4 CORNER SECTION 35-85-40

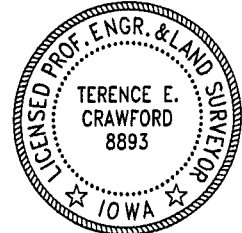


DISTANCES PLUMB CHAINED

E1/4 CORNER SECTION 35-85-40

I HEREBY CERTIFY THAT THIS LAND SURVEYING DOCUMENT WAS PREPARED AND THE RELATED SURVEY WORK WAS PERFORMED BY ME OR UNDER MY DIRECT PERSONAL SUPERVISION AND THAT I AM A DULY LICENSED LAND SURVEYOR UNDER THE LAWS OF THE STATE OF IOWA.

Terence E. Crawford      DEC 15 2006  
 TERENCE E. CRAWFORD      DATE  
 IA LICENSE NO. 8893      EXP. DATE DECEMBER 31, 2007



SE PROJECT NO. 25806  
 DRAWN BY: LLL