

INDEXED SM
 FOLLOW UP _____
 PROOFED _____
 SCANNED _____

Instrument #: 2016-0423
 03/02/2016 02:29:11 PM Total Pages: 1
 PLC PLAT CORNER CER
 Recording Fee: \$7.00 Transfer Tax: \$0
 Denise Meeves, Recorder, Crawford County Iowa



PREPARED BY - JOSEPH P. RUESCHENBERG - SUNDQUIST ENGINEERING - 120 S. MAIN, DENISON, IOWA 51442 - PHONE (712) 263-8118

UNITED STATES PUBLIC LAND SURVEY CORNER CERTIFICATE OF

LAND SURVEY MONUMENT SITUATED IN SECTION 35, T 85 N, R 40 W OF
 THE 5TH P.M., CRAWFORD COUNTY, IOWA.
 PREVIOUSLY RECORDED IN BOOK _____, PAGE _____, OTHER _____

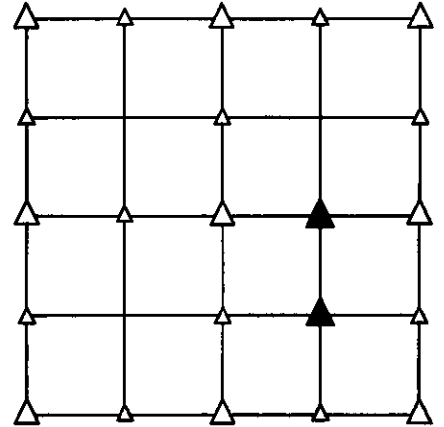
MONUMENT DESCRIPTION AND REMARKS

NW CORNER

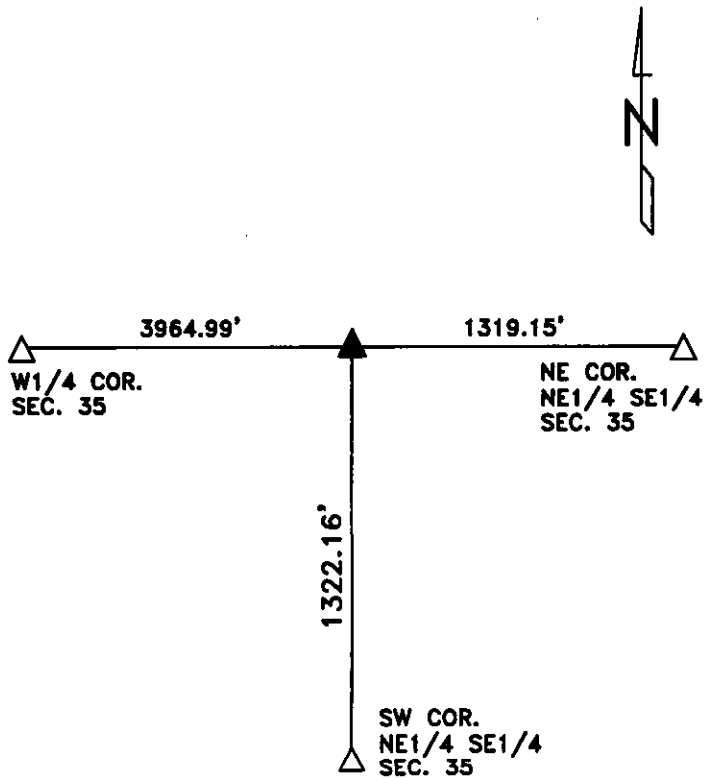
NE1/4 SE1/4 - SET 5/8" DIA. X 18" IRON PIN W/ORANGE CAP #14709 1.0' DEEP. SET ON LINE AND AT SPLIT BETWEEN CENTER & E1/4 COR OF SEC. 35.

SW CORNER

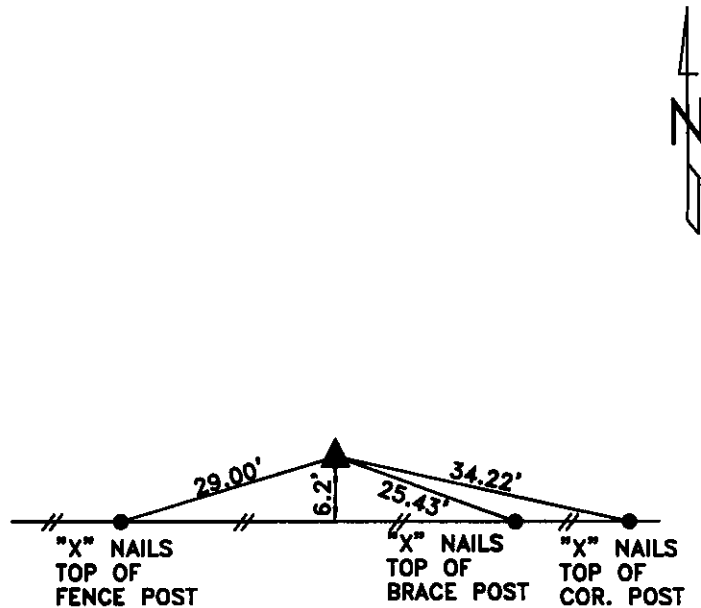
NE1/4 SE1/4 - SET 5/8" DIA. X 18" IRON PIN W/ORANGE CAP #14709 FLUSH. SET ELECTRIC FENCE POST 0.2' SO. OF PIN. SET PIN ON LINE AND AT SPLIT BETWEEN SW COR. OF SE1/4 SE1/4 & NW COR. OF NE1/4 SE1/4 OF SEC. 35.



PLAN VIEW SHOWING RELATIVE LOCATION OF MONUMENT AND REFERENCE POINTS.



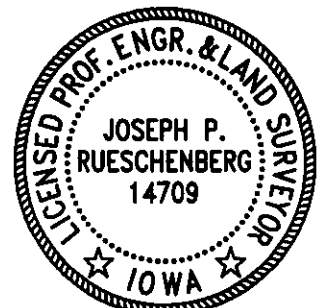
DISTANCES PLUMB CHAINED
 NW CORNER NE1/4 SE1/4
 SECTION 35-85-40



DISTANCES PLUMB CHAINED
 SW CORNER NE1/4 SE1/4
 SECTION 35-85-40

I HEREBY CERTIFY THAT THIS LAND SURVEYING DOCUMENT WAS PREPARED AND THE RELATED SURVEY WORK WAS PERFORMED BY ME OR UNDER MY DIRECT PERSONAL SUPERVISION AND THAT I AM A DULY LICENSED LAND SURVEYOR UNDER THE LAWS OF THE STATE OF IOWA.

Joseph P. Rueschenberg 2-5-2016
 JOSEPH P. RUESCHENBERG DATE
 IA LICENSE NO. 14709 EXP. DATE DECEMBER 31, 2016



SE PROJECT NO. 20516
 DRAWN BY: LLL