

ADP

Prepared by: Nathan H. Carlson Address: 3701 12th Street N, Suite 206, St. Cloud, MN 56303 Phone: 320-253-9495

UNITED STATES PUBLIC LAND SURVEY CORNER CERTIFICATE FOR

Land survey monuments situated in Section 32, Township 85N
 Range 40W, of the Fifth Principal Meridian, Crawford County, Iowa.

Previously recorded in _____ in County Recorder's Office.

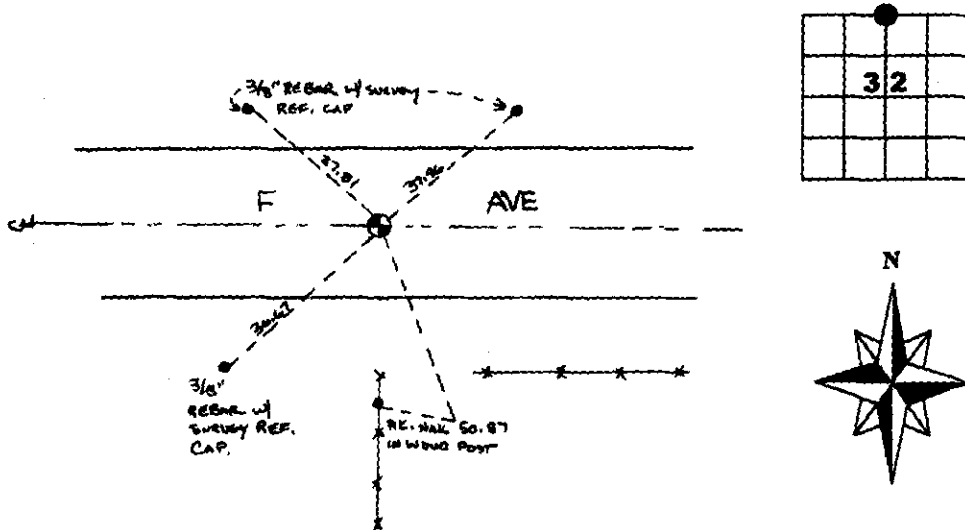
(Show reason for preparing this certificate, the evidence and detailed procedures used in establishing the corner positions & monumentation found or placed.)

MONUMENT DESCRIPTION AND REMARKS:

Notes from Westwood Professional Services, Inc. in 2006 indicate they found a 1" rebar lying flat in the vicinity of the corner. A 5'x5' hole, 4.5' deep was excavated and a concrete monument with pin was found. The 1" rebar was placed over top the concrete monument. In 2011, I found the 1" rebar 1 foot below the surface and established reference ties as noted below.

PLAN - VIEW

(Show a minimum of three reference ties to durable physical objects, relevant monuments and physical conditions that will enable recovery of the corner.)



I hereby certify that this land surveying document was prepared and the related survey work was performed by me or under my direct personal supervision and that I am a duly licensed Land Surveyor under the laws of the State of Iowa.

Nathan H. Carlson 1/4/2012
 Signature Date

Typed/Printed Name: Nathan H. Carlson
 License Number: 19314
 My license renewal date is December 31, 2012
 Pages or sheets covered by this seal: This sheet

Corners to be Indexed

Corners	Section	Twp.	Range
N1/4	32	85N	40W