

RECORDED
 INDEXED
 FILED
 JAN 12 2012
 ST. CLOUD, MN

Prepared by: Nathan H. Carlson Address: 3701 12th Street N, Suite 206, Phone: 320-253-9495
St. Cloud, MN 56303

UNITED STATES PUBLIC LAND SURVEY CORNER CERTIFICATE FOR

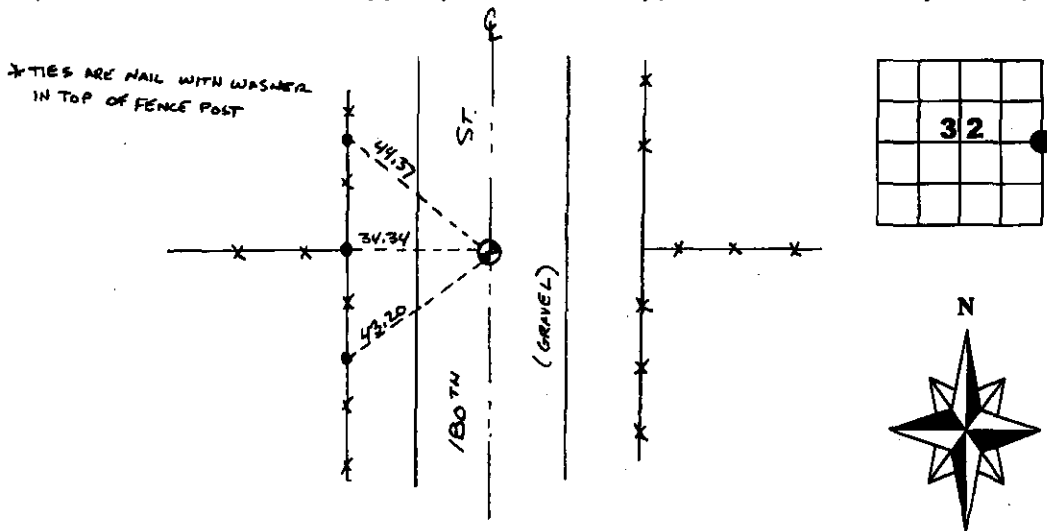
Land survey monuments situated in Section 32, Township 85N
 Range 40W, of the Fifth Principal Meridian, Crawford County, Iowa.
 Previously recorded in _____ in County Recorder's Office.

(Show reason for preparing this certificate, the evidence and detailed procedures used in establishing the corner positions & monumentation found or placed.)

MONUMENT DESCRIPTION AND REMARKS: Excavated the area with a backhoe and found a monument
in 4" x 4" x 24" concrete. Measured 2638.20 feet to the SE section corner and 2644.41 feet to the
NE section corner. The monument fell in line with occupation fences to the west and east.
Set a 1/2" rebar with LS cap 19314 over the top of the concrete monument and established reference
ties as noted below.

PLAN - VIEW

(Show a minimum of three reference ties to durable physical objects, relevant monuments and physical conditions that will enable recovery of the corner.)



SEAL



SLSI-3/98

I hereby certify that this land surveying document was prepared and the related survey work was performed by me or under my direct personal supervision and that I am a duly licensed Land Surveyor under the laws of the State of Iowa.

Nathan H. Carlson 1/4/2012
 Signature Date

Typed/Printed Name: Nathan H. Carlson

License Number: 19314

My license renewal date is December 31, 2012

Pages or sheets covered by this seal: This sheet

Corners to be Indexed

Corners	Section	Twp.	Range
E1/4	32	85N	40W