

97 JUN -5 AM 10: 08

INST. NO. 97-1365

DENISE MEEVES, RECORDER

Denise Meeves
FEE \$ 6.00

INDEXED dm
FOLLOW UP _____
PROOFED _____

**UNITED STATES PUBLIC LAND SURVEY CORNER CERTIFICATE
OF**

LAND SURVEY MONUMENTS SITUATED IN SECTION 20, TOWNSHIP 85 North, RANGE 40 West,
OF THE 5th PRINCIPAL MERIDIAN, CRAWFORD COUNTY, IOWA.

PREVIOUSLY RECORDED IN BOOK: _____, PAGE: _____

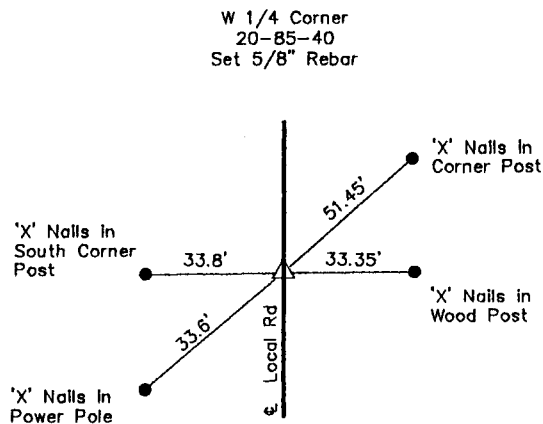
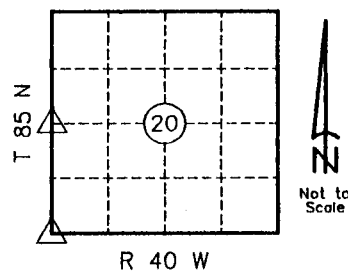
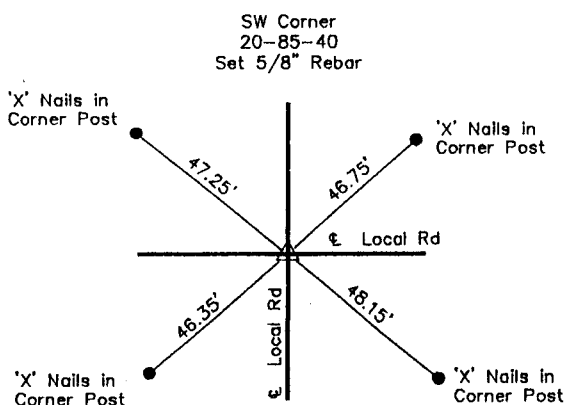
MONUMENT DESCRIPTION AND REMARKS: _____

1). SW Corner 20-85-40; Set 5/8" Rebar

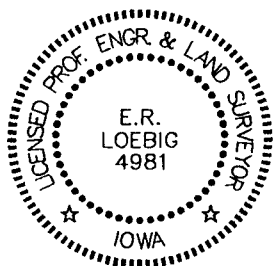
2). W 1/4 Corner 20-85-40; Set 5/8" Rebar

Stone ties were obtained from Crawford County Engineer's Office, were field verified and retied.

PLAN-VIEW



None of the ties obtained from the County Engineers Office checked out in the field. Checked for more info at Engineers Office, nothing found on road plans, etc. Set SW corner from Existing Corner Posts, due to the fact that road plans stated the Section Line and Centerline were one. Aerials also showed the West 1/4 Cor as splitting the ROW. Did so and Set pin in line with Fence Line to the West.



I hereby certify that this land surveying document was prepared and the related survey work was performed by me or under my direct personal supervision and that I am a duly licensed Land Surveyor under the laws of the State of Iowa.

E.R. Loebig 6/3/1997
E.R. Loebig, Land Surveyor Date

License number: 4981
My registration renewal date is December 31, 1997
Pages or sheets covered by this seal: one (1)

Corners to be Indexed

Corner	Section	Twp.	Range
SW Cor.	20	85	40
W 1/4 Cor.	20	85	40

L and H Engineers & Surveyors

117 South 2nd Street
Cherokee, Iowa 51012
Tel. (712) 225-0560
Fax (712) 225-8017