



INDEXED ME
FOLLOW UP _____
PROOFED _____
SCANNED _____

Crawford Denise Meeves
FEE BOOK 2005-0391 2/16/2005 @ 08:31AM
PLC PLAT CORNER CERBook: Page:05-0391 #: 1
Total Fees: \$7.00

This document prepared by : Semke & Associates - 712-792-2276
Micheal G. Semke, L.S. #10318 - 716 N. Crawford St. - Carroll, Iowa

UNITED STATES PUBLIC LAND SURVEY CORNER CERTIFICATE
OF

Land Survey Monuments situated in Section 1, Township 85 North, Range 40
West, of the Fifth Principal Meridian, Crawford County, Iowa.
Previously recorded in Book _____, Page _____ in County Recorder's Office.

(Show reason for preparing this certificate, the evidence and detailed procedures used in establishing the corner positions and monumentation found or placed.)

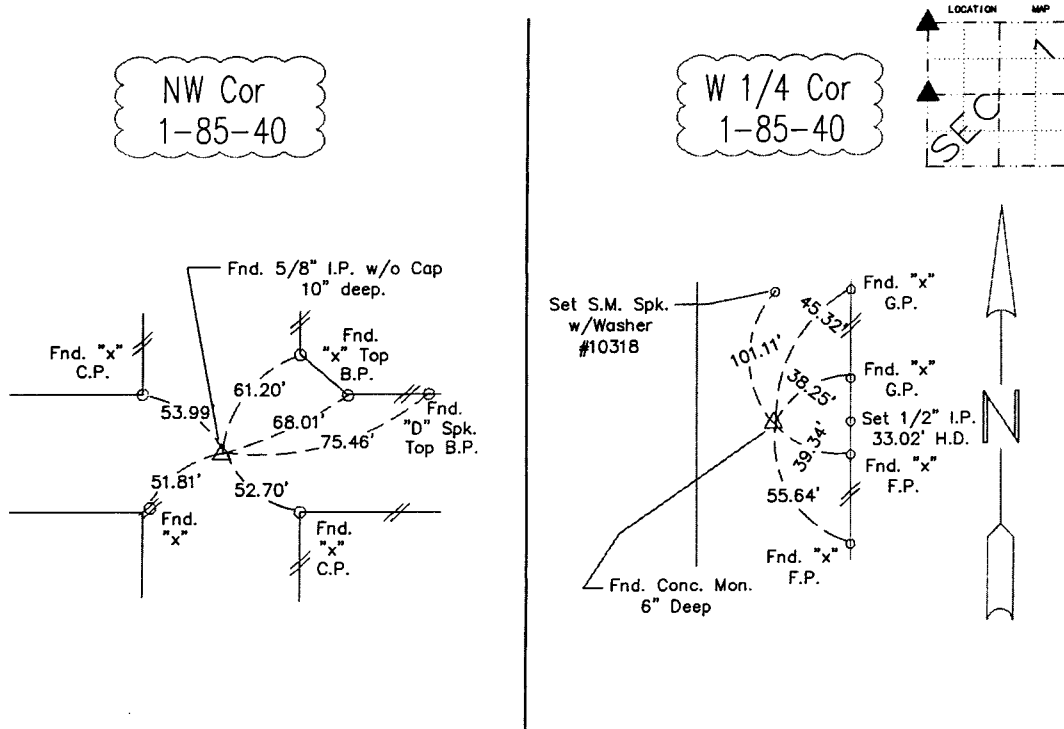
W 1/4 Corner Found Conc. Mon. w/rod for Cor.
6" Deep

NW Corner Found 5/8" I.P. w/o Cap 10" Deep

Note: All pins set are 1/2" x 24" Rerod w/Yellow Cap #10318 unless noted otherwise.

PLAN - VIEW

(Show a minimum of three reference ties to durable physical objects, relevant monuments and physical conditions that will enable recovery of the corner.)



Note: all ties slope chained unless noted otherwise.

PROFESSIONAL LAND SURVEYOR
MICHEAL G. SEMKE
10318
IOWA

I HEREBY CERTIFY THAT THIS LAND SURVEYING DOCUMENT AND RELATED SURVEY WORK WAS PERFORMED BY ME OR UNDER MY DIRECT PERSONAL SUPERVISION AND THAT I AM A DULY LICENSED LAND SURVEYOR UNDER THE LAWS OF THE STATE OF IOWA.

Micheal G. Semke 1/15/05
Signature Date
Micheal G. Semke, L.S. No. 10318
Printed of Typed Name

Pages of sheets covered by this set THIS PAGE My license is subject to renewal 12/31/05.

List Corners to be Indexed			
Corners	Section	Twp	Range
W 1/4 Cor	1	85	40
E 1/4 Cor	2	85	40
NW Cor	1	85	40
NE Cor	2	85	40