

INDEXED SM  
 FOLLOW UP \_\_\_\_\_  
 PROOFED \_\_\_\_\_  
 SCANNED \_\_\_\_\_

Instrument #: 2018-2681  
 12/27/2018 09:42:51 AM Total Pages: 1  
 PLC PLAT CORNER CER  
 Recording Fee: \$7.00 Transfer Tax: \$0  
 Denise Meeves, Recorder, Crawford County Iowa



PREPARED BY - JOSEPH P. RUESCHENBERG - SUNDQUIST ENGINEERING - 120 S. MAIN, DENISON, IOWA 51442 - PHONE (712) 263-8118

UNITED STATES PUBLIC LAND SURVEY CORNER CERTIFICATE  
 OF

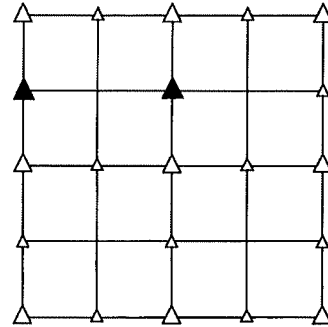
LAND SURVEY MONUMENT SITUATED IN SECTION 28, T 85 N, R 40 W OF  
 THE 5TH P.M., CRAWFORD COUNTY, IOWA.

PREVIOUSLY RECORDED IN BOOK \_\_\_\_\_, PAGE \_\_\_\_\_, OTHER \_\_\_\_\_

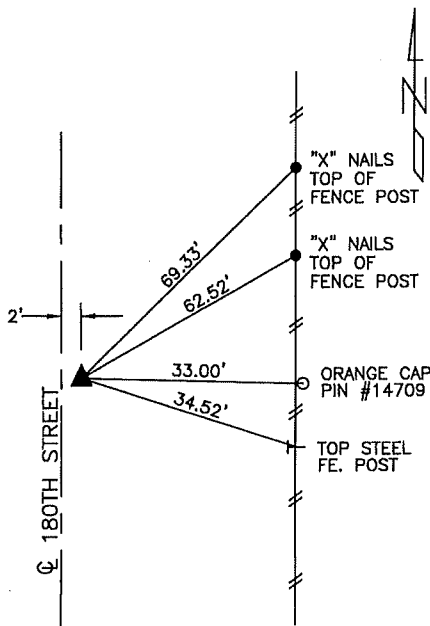
MONUMENT DESCRIPTION AND REMARKS

NW CORNER  
 S1/2 NW1/4 - SET 5/8" DIA. X 18" IRON PIN W/ORANGE CAP  
 #14709 0.4' DEEP. SET ON LINE & AT SPLIT BETWEEN  
 W1/4 COR. & NW COR. OF SEC. 28.

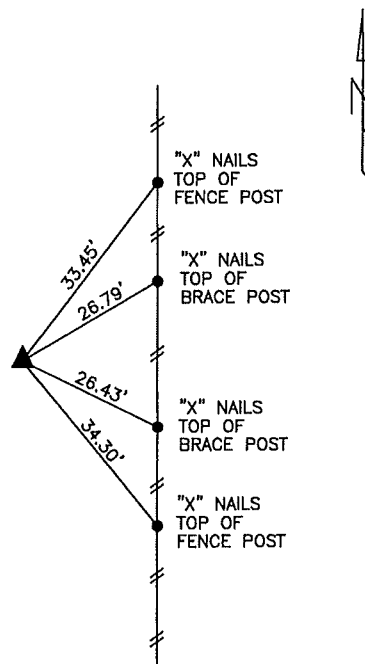
NE CORNER  
 S1/2 NW1/4 - SET 5/8" DIA. X 18" IRON PIN W/ORANGE CAP  
 #14709 0.8' DEEP. SET ON LINE & AT SPLIT BETWEEN  
 CENTER & N1/4 COR. OF SEC. 28.



PLAN VIEW SHOWING RELATIVE LOCATION OF MONUMENT AND REFERENCE POINTS.



DISTANCES PLUMB CHAINED  
 NW CORNER S1/2 NW1/4  
 SECTION 28-85-40



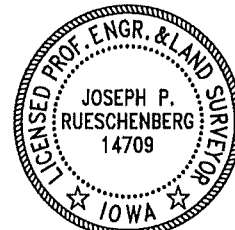
DISTANCES PLUMB CHAINED  
 NE CORNER S1/2 NW1/4  
 SECTION 28-85-40

I HEREBY CERTIFY THAT THIS LAND SURVEYING DOCUMENT WAS PREPARED  
 AND THE RELATED SURVEY WORK WAS PERFORMED BY ME OR UNDER MY  
 DIRECT PERSONAL SUPERVISION AND THAT I AM A DULY LICENSED LAND  
 SURVEYOR UNDER THE LAWS OF THE STATE OF IOWA.

Joseph P. Rueschenberg 12-17-2018  
 JOSEPH P. RUESCHENBERG DATE

IA LICENSE NO. 14709

EXP. DATE DECEMBER 31, 2018



SE PROJECT NO. 24718  
 DRAWN BY: LLL