

INDEXED  
 FOLLOW UP  
 PREPARED  
 SEARCHED

Crawford County Recorder  
 Denise Meeves  
**Fee Book 2013-1639**  
 07/12/2013 011:32AM  
 PLC PLAT CORNER CER  
 Book: Page: # Pages: 1  
 Total Fees: \$7.00

PREPARED BY - JAMES C. SAILER - IDOT. P.O.B. 987, SIOUX CITY IOWA 51102-0987 PHONE (712) 276-1451



UNITED STATES PUBLIC LAND SURVEY CORNER CERTIFICATE  
 OF



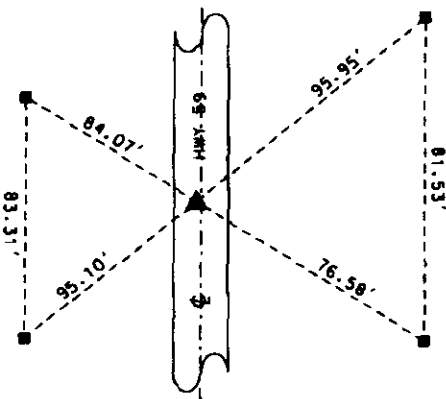
Land Survey Monument Situated in Section 25,  
 Township 85 NORTH, Range 40 WEST Of The Fifth Principal Meridian,  
 CRAWFORD County, Iowa. Previously Recorded In \_\_\_\_\_  
 In The County Recorders Office.

Monument Description and Remarks:

- ① E 1/4 CORNER SEC 25-85-40. FOUND IDOT ALUM DISK IN ACC. SET IDOT BRONZE DISK W/  
 CUT TRIANGLE IN NEW ASPHALT OVERLAY.
- ② NE CORNER SEC 25-85-40. FOUND IDOT ALUM DISK IN ACC. SET IDOT BRONZE DISK W/  
 CUT TRIANGLE IN NEW ASPHALT OVERLAY.

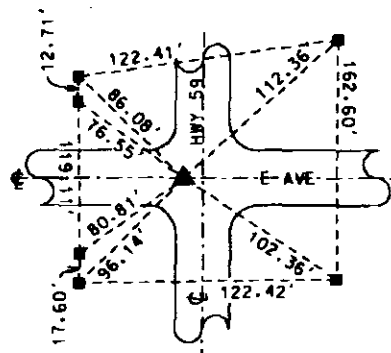
PLAN - VIEW

① E 1/4 CORNER SEC 25-85-40



■ = CONCRETE MONUMENT

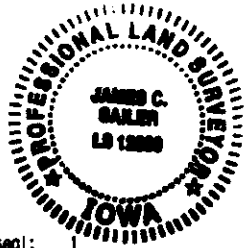
② NE CORNER SEC 25-85-40



■ = CONCRETE MONUMENT

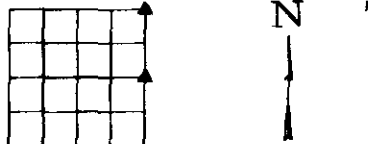
I hereby certify that this land surveying document was prepared and the related survey work was performed by me or under my direct personal supervision and that I am a duly licensed Professional Land Surveyor under the Laws of the State of Iowa.

Signature: *James C. Sailer* Date: *7/12/13*  
 James C. Sailer - Lisc. No. 12090



My License Renewal Date is December 31, 2014  
 Pages or sheets covered by this seal: 1

IOWA DEPARTMENT OF TRANSPORTATION  
 CRAWFORD COUNTY FIELD BOOK 1 - PAGE 88-89  
 CERTIFICATE NUMBER 24-10



DATE: 07/01/2013 BY: COH

Corner	Section	Twp	Range
E 1/4	25	85	40
NE	25	85	40