

INDEXED
 FOLLOW UP
 PROVIDED
 SCHEDULED

Crawford County Recorder
 Denise Meeves
Fee Book 2013-1638
 07/12/2013 @ 11:28AM
 PLC PLAT CORNER CER # Pages: 1
 Book: Page: \$7.00
 Total Fees:

PREPARED BY - JAMES C. SAILER - IDOT, P.O.B. 987, SIOUX CITY IOWA 51102-0987 PHONE (712) 276-1451



UNITED STATES PUBLIC LAND SURVEY CORNER CERTIFICATE
 OF



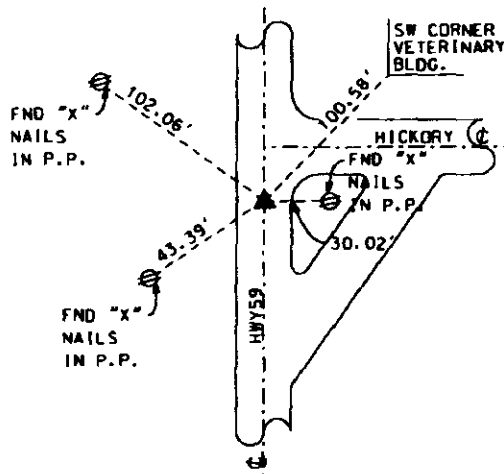
Land Survey Monument Situated in Section 24,
 Township 85 NORTH, Range 40 WEST Of The Fifth Principal Meridian,
 CRAWFORD County, Iowa. Previously Recorded In _____
 In The County Recorders Office.

Monument Description and Remarks:

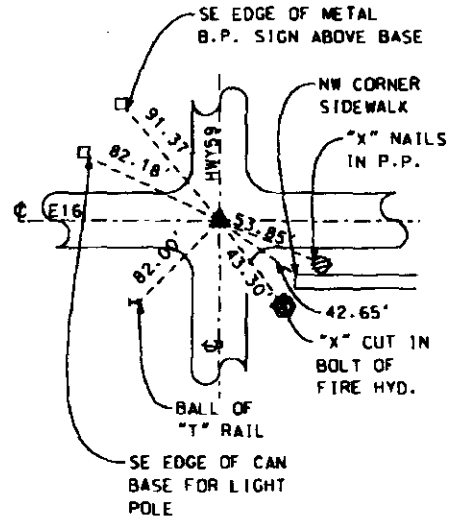
- ① E 1/4 COR 24-85-40. FOUND MAG NAIL IN ACC. SET IDOT BRONZE DISK W/ CUT TRIANGLE IN NEW ASPHALT OVERLAY
- ② NE COR 24-85-40. FOUND NOTHING IN ACC OR PCC. SET IDOT BRONZE DISK W/ CUT TRIANGLE IN PCC PATCH FROM PREVIOUS TIES

PLAN - VIEW

① E 1/4 COR 24-85-40



② NE COR 24-85-40



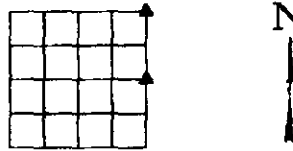
I hereby certify that this land surveying document was prepared and the related survey work was performed by me or under my direct personal supervision and that I am a duly licensed Professional Land Surveyor under the Laws of the State of Iowa.

Signature: *James C. Sailer* 7/10/13
 James C. Sailer - Lic. No. 12090 Date



My License Renewal Date is December 31, 2014
 Pages or sheets covered by this seal: 1

IOWA DEPARTMENT OF TRANSPORTATION
 CRAWFORD COUNTY FIELD BOOK 1 . PAGE 91-92
 CERTIFICATE NUMBER 24-11



DATE: 07/01/2013 BY: CMH

Corner	Corner to be Indexed		
	Section	Twp	Range
E 1/4	24	85	40
NE	24	85	40