

INDEXED DM/DM
 FOLLOW UP DM
 PROOFED _____
 SCANNED DM

Instrument #: 2016-1585
 07/28/2016 11:11:06 AM Total Pages: 1
 PLC PLAT CORNER CER
 Recording Fee: \$0.00 Transfer Tax: \$0
 Denise Meeves, Recorder, Crawford County Iowa



PREPARED BY: PAUL ASSMAN-CRAWFORD COUNTY ENGINEER'S OFFICE-COURTHOUSE-DENISON, IA.-712-263-2449

UNITED STATES PUBLIC LAND SURVEY CORNER CERTIFICATE OF

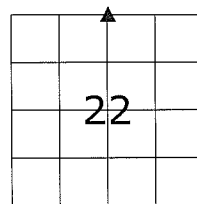
LAND SURVEY MONUMENT SITUATED IN MORGAN TOWNSHIP, THE NORTH 1/4 CORNER OF SECTION 22, T-85N,
R-40W OF THE FIFTH P.M. CRAWFORD COUNTY, IOWA.

PREVIOUSLY RECORDED AS NO. 2009-0291

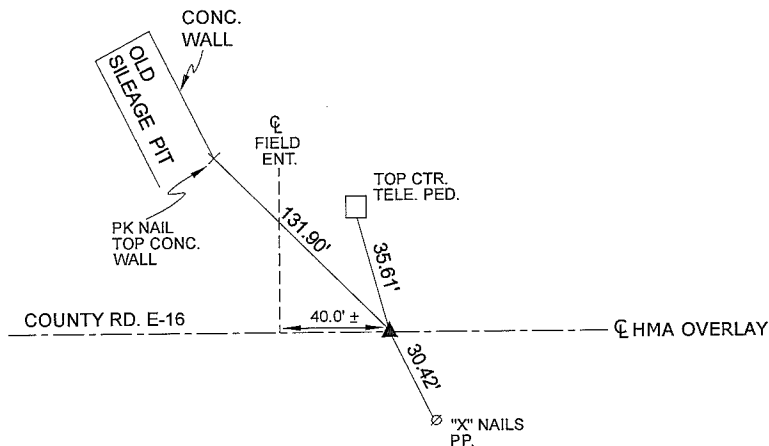
MONUMENT DESCRIPTION AND REMARKS

NORTH 1/4 CORNER SEC. 22-85-40

FOUND CARRIAGE BOLT AS SET PER PREVIOUS TIES.
 COMPLETED HMA OVERLAY. SET CARRIAGE BOLT 0.05'
 DEEP AND RETIED CORNER.



NORTH 1/4 CORNER SEC. 22-85-40



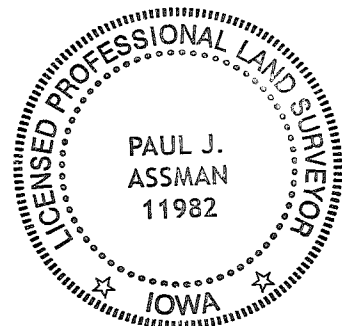
ALL DISTANCES ARE PLUMB CHAINED

CERTIFICATION:

I HEREBY CERTIFY THAT THIS LAND SURVEYING DOCUMENT WAS PREPARED AND THE RELATED SURVEY WORK WAS PERFORMED BY ME OR UNDER MY DIRECT PERSONAL SUPERVISION AND THAT I AM A DULY LICENSED LAND SURVEYOR UNDER THE LAWS OF THE STATE OF IOWA.

Paul J. Assman 7/27/16
 Signature Date of Survey

PAUL J. ASSMAN 11982 12-31-16
 Typed Name L.S. No. License Renewal Date



Pages covered by this seal 1