

INDEXED JM/SM
 FOLLOW UP KM
 PROOFED _____
 SCANNED JM

Instrument #: 2016-1584
 07/28/2016 11:11:06 AM Total Pages: 1
 PLC PLAT CORNER CER
 Recording Fee: \$0.00 Transfer Tax: \$0
 Denise Meeves, Recorder, Crawford County Iowa



PREPARED BY: PAUL ASSMAN-CRAWFORD COUNTY ENGINEER'S OFFICE-COURTHOUSE-DENISON, IA.-712-263-2449

UNITED STATES PUBLIC LAND SURVEY CORNER CERTIFICATE OF

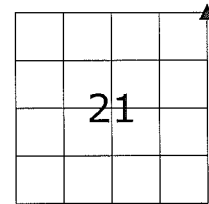
LAND SURVEY MONUMENT SITUATED IN MORGAN TOWNSHIP, THE NORTHEAST CORNER OF SECTION 21, T-85N,
R-40W OF THE FIFTH P.M. CRAWFORD COUNTY, IOWA.

PREVIOUSLY RECORDED AS NO. 2009-0292

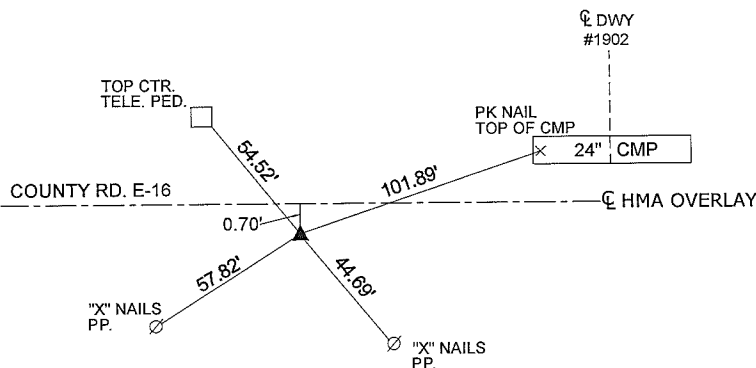
MONUMENT DESCRIPTION AND REMARKS

NORTHEAST CORNER SEC. 21-85-40

FOUND CARRIAGE BOLT FLUSH WITH SURFACE AS SET PER PREVIOUS TIES. COMPLETED HMA OVERLAY. SET CARRIAGE BOLT 0.05' DEEP AND RETIED CORNER.



NORTHEAST CORNER SEC. 21-85-40



ALL DISTANCES ARE PLUMB CHAINED

CERTIFICATION:

I HEREBY CERTIFY THAT THIS LAND SURVEYING DOCUMENT WAS PREPARED AND THE RELATED SURVEY WORK WAS PERFORMED BY ME OR UNDER MY DIRECT PERSONAL SUPERVISION AND THAT I AM A DULY LICENSED LAND SURVEYOR UNDER THE LAWS OF THE STATE OF IOWA.

Paul J. Assman 7/27/16
 Signature Date of Survey

PAUL J. ASSMAN 11982 12-31-16
 Typed Name L.S. No. License Renewal Date

Pages covered by this seal 1

