

INDEXED _____
 FOLLOW UP _____
 PROOFED _____
 SCANNED _____

REC007427



Crawford County Recorder Denise Meeves
 FEE BOOK 2005-2089 8/05/2005 @ 09:22AM
 PLC PLAT CORNER CERBook: Page:05-2089 #: 1
 Total Fees: \$7.00

WARDER C. HILLHOUSE, JR. MHF ENGINEERING P.C. 300 W. MCKINLEY JEFFERSON, IA. (515)386-4101
UNITED STATES PUBLIC LAND SURVEY CORNER CERTIFICATE OF

Land Survey Monuments in Section 21, Township 85, Range 40, of the Fifth Principal Meridian, CRAWFORD County, Iowa.
 Previously recorded in _____ in County Recorder's Office.

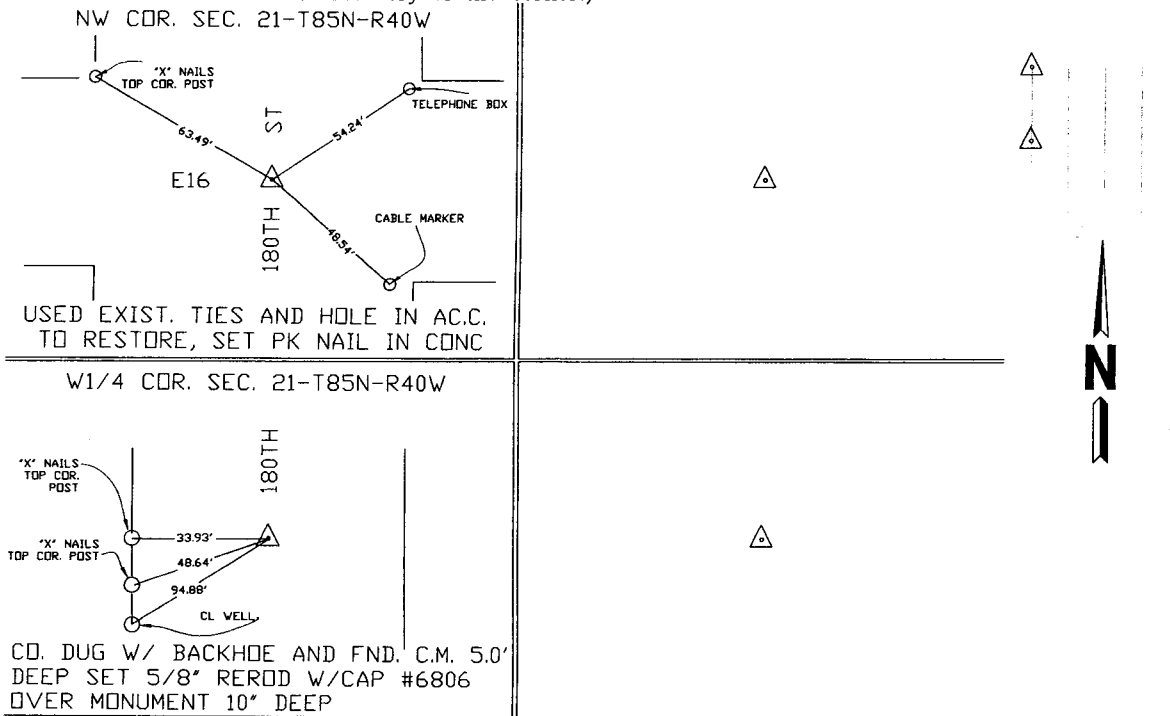
(book, page, document number, etc.)

(Show reason for preparing this certificate, the evidence and detailed procedures used in establishing the corner positions and monumentation found or placed.)

Monument Description and Remarks:

PLAN - VIEW

(Show a minimum of three reference ties to durable physical objects, relevant monuments and physical conditions that will enable recovery of the corner.)



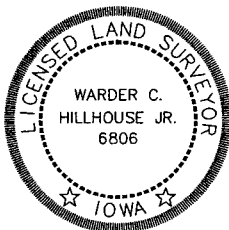
I hereby certify that this land surveying document and the related survey work was performed by me or under my direct personal supervision and that I am a duly licensed land surveyor under the laws of the state of Iowa.

Signature: Warder C. Hillhouse Jr.
 Warder C. Hillhouse, Jr.

Date: 7/26/05 Lic. No. 6806

License Renewal Dec. 31, 2005

Date Surveyed: 3/23/05



Seal

List Corners to be Indexed

Corners	Section	Twp	Range
NW COR	21	85	40
W1/4 COR	21	85	40

NOTE: CORRECTED CORNERS TO BE INDEXED FEE BOOK 2005-1037 PLAT CORNER CERBOOK PAGE 2005-1037 #1.

File No. 05042-1



M.H.F. ENGINEERING, P.C.
 ENGINEERS - LAND SURVEYORS
 Jefferson, Iowa 50129 Ph. (515)386-4101