

97 JUN -5 AM 10: 08

INST. NO. 97-1365  
DENISE MEEVES, RECORDER  
*Denise Meeves*  
FEE \$6.00

INDEXED dm  
FOLLOW UP \_\_\_\_\_  
PROOFED \_\_\_\_\_

**UNITED STATES PUBLIC LAND SURVEY CORNER CERTIFICATE  
OF**

LAND SURVEY MONUMENTS SITUATED IN SECTION 20, TOWNSHIP 85 North, RANGE 40 West,  
OF THE 5th PRINCIPAL MERIDIAN, CRAWFORD COUNTY, IOWA.

PREVIOUSLY RECORDED IN BOOK: \_\_\_\_\_, PAGE: \_\_\_\_\_

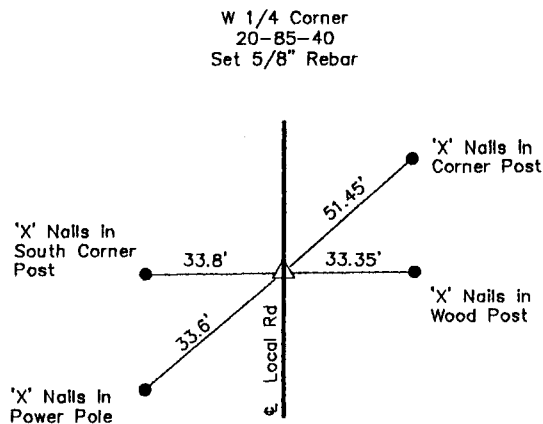
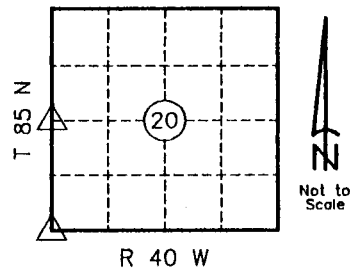
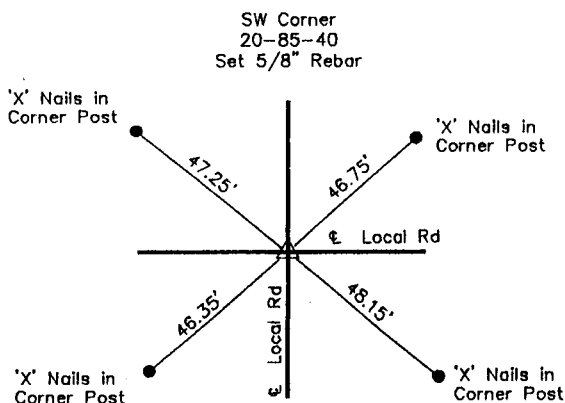
MONUMENT DESCRIPTION AND REMARKS: \_\_\_\_\_

1). SW Corner 20-85-40; Set 5/8" Rebar

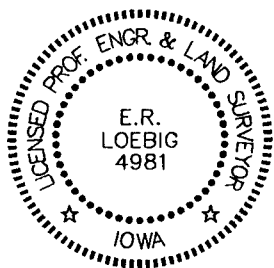
2). W 1/4 Corner 20-85-40; Set 5/8" Rebar

Stone ties were obtained from Crawford County Engineer's Office, were field verified and retied.

**PLAN-VIEW**



None of the ties obtained from the County Engineers Office checked out in the field. Checked for more info at Engineers Office, nothing found on road plans, etc. Set SW corner from Existing Corner Posts, due to the fact that road plans stated the Section Line and Centerline were one. Aerials also showed the West 1/4 Cor as splitting the ROW. Did so and Set pin in line with Fence Line to the West.



I hereby certify that this land surveying document was prepared and the related survey work was performed by me or under my direct personal supervision and that I am a duly licensed Land Surveyor under the laws of the State of Iowa.

*E.R. Loebig* 6/3/1997  
E.R. Loebig, Land Surveyor Date

License number: 4981  
My registration renewal date is December 31, 1997  
Pages or sheets covered by this seal: one (1)

**Corners to be Indexed**

Corner	Section	Twp.	Range
SW Cor.	20	85	40
W 1/4 Cor.	20	85	40

**L and H Engineers & Surveyors**

117 South 2nd Street  
Cherokee, Iowa 51012  
Tel. (712) 225-0560  
Fax (712) 225-8017