

INDEXED
FOLLOW UP
PROOFED
SCANNED

REC006097



Crawford County Recorder Denise
FEE BOOK 2005-0937 4/14/2005 @ 09:30AM
PLC PLAT CORNER CERBook: Page:05-0937 #: 1
Total Fees: \$7.00

PREPARED BY: JOHN A. MUNSON - SUNDQUIST ENGINEERING - 706 IOWA STREET, ONAWA, IOWA 51040-PHONE (712)423-3131

UNITED STATES PUBLIC LAND SURVEY CORNER CERTIFICATE OF

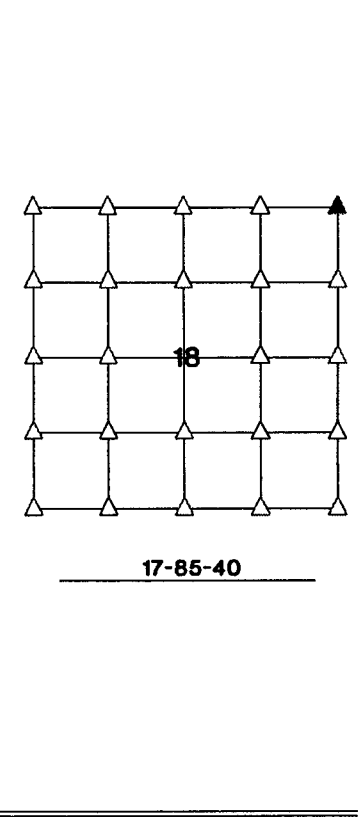
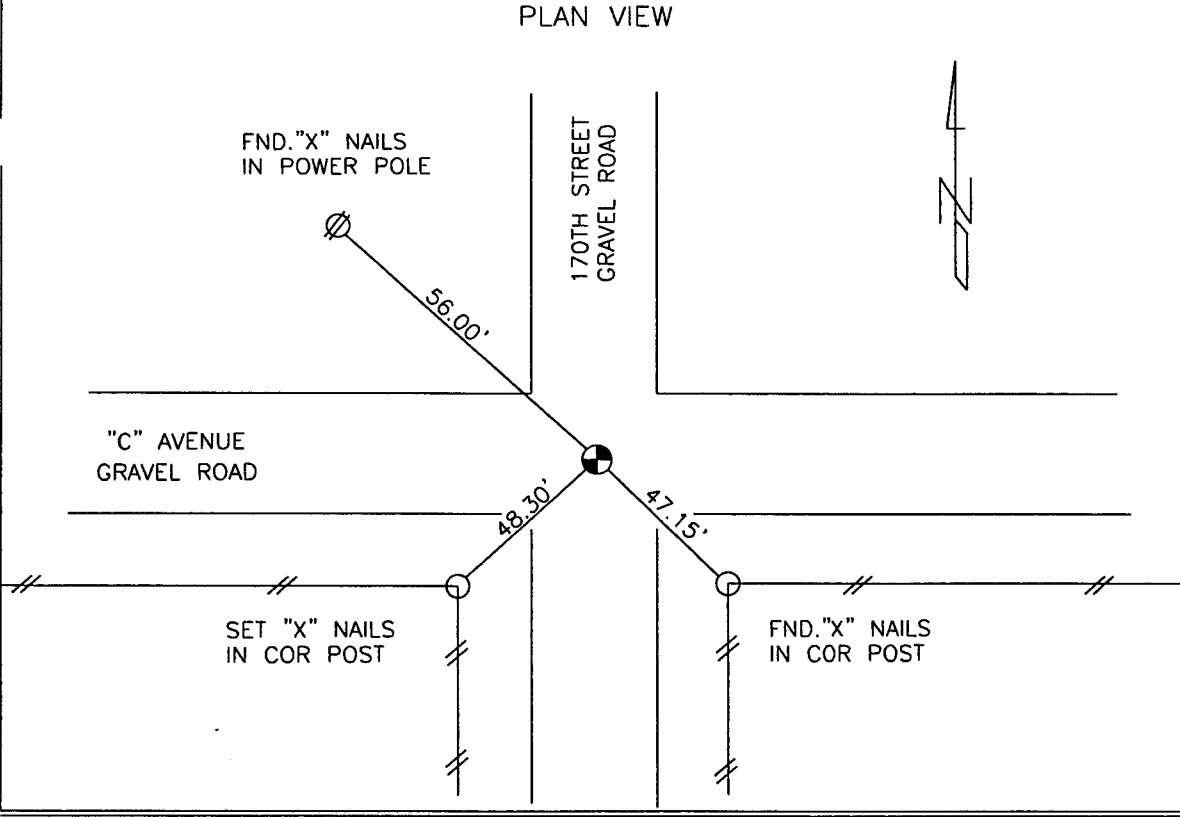
LAND SURVEY MONUMENT SITUATED IN SECTION 18, TOWNSHIP 85 NORTH, RANGE 40 WEST
OF THE FIFTH PRINCIPAL MERIDIAN, CRAWFORD, COUNTY, IOWA.
PREVIOUSLY RECORDED IN # _____ IN COUNTY RECORDERS OFFICE.

MONUMENT DESCRIPTION AND REMARKS

NORTHEAST CORNER OF SECTION 18-85-40.
FOUND 1" ROUND STEEL PIN 10" DEEP
PIN FITS CENTERLINE ROADS IN ALL DIRECTIONS

L. STUKENHOLTZ & R. ANDERSON

DATE 4-07-05



I HEREBY CERTIFY THAT THIS LAND SURVEYING DOCUMENT AND THE RELATED SURVEY WORK WAS PERFORMED BY ME OR UNDER MY DIRECT PERSONAL SUPERVISION AND THAT I AM A DULY LICENSED LAND SURVEYOR UNDER THE LAWS OF THE STATE OF IOWA.

John A. Munson III 4-11-05
JOHN A. MUNSON III DATE

IA. LICENSE NO. 11118 EXP. DATE DECEMBER 31, 2006

SE PROJECT NO. 21905-T3 DRAWN BY: LLH

