

INDEX \_\_\_\_\_  
 SCAN \_\_\_\_\_  
 FOLLOW UP \_\_\_\_\_  
 PROOF \_\_\_\_\_

Instrument #: 2023-1577  
 09/08/2023 09:52:56 AM Total Pages: 1  
 PLC PLAT COR CERT  
 Recording Fee: \$7.00 Transfer Tax: \$0  
 Sara Meseck, Recorder, Crawford County Iowa



PREPARED BY - TERENCE E. CRAWFORD - SUNDQUIST ENGINEERING - 120 S. MAIN, DENISON, IOWA 51442 - PHONE (712) 263-8118

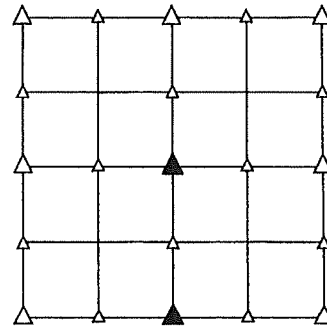
UNITED STATES PUBLIC LAND SURVEY CORNER CERTIFICATE  
 OF

LAND SURVEY MONUMENT SITUATED IN SECTION 8, T 85 N, R 40 W OF  
 THE 5TH P.M., CRAWFORD COUNTY, IOWA.  
 PREVIOUSLY RECORDED IN BOOK \_\_\_\_\_, PAGE \_\_\_\_\_, OTHER \_\_\_\_\_

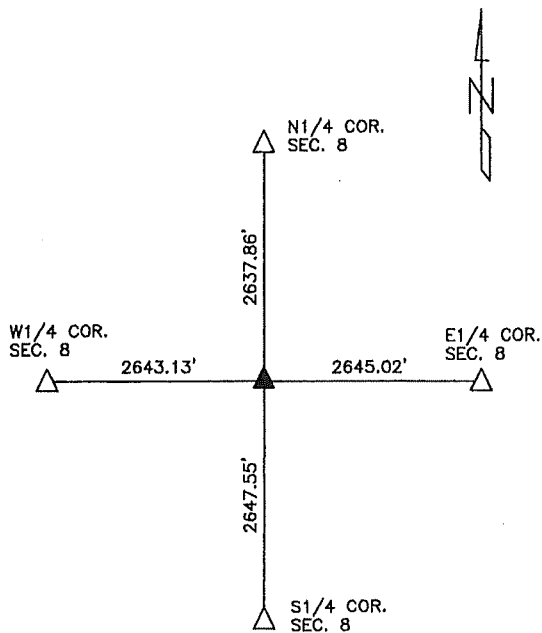
MONUMENT DESCRIPTION AND REMARKS

CENTER - SET 5/8" DIA. X 18" IRON PIN W/YELLOW CAP #8893  
 0.2' DEEP. SET AT INTERSECTION OF LINES FROM W1/4  
 COR. TO E1/4 & FROM S1/4 COR. TO N1/4 COR. OF  
 SECTION 8.

S1/4 CORNER - SET 5/8" DIA. X 18" IRON PIN W/YELLOW CAP  
 #8893 0.5' DEEP. RESET USING PREVIOUS SURVEY  
 INFORMATION.

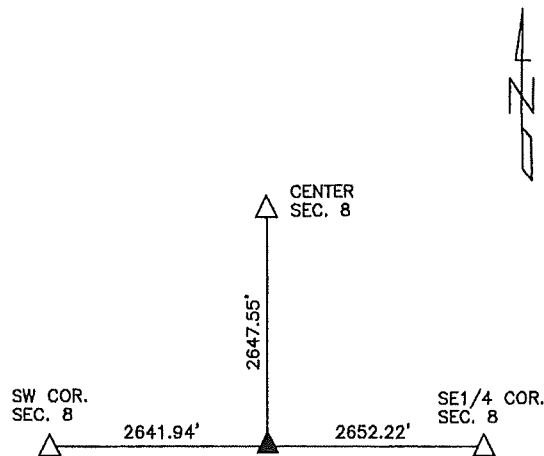


PLAN VIEW SHOWING RELATIVE LOCATION OF MONUMENT AND REFERENCE POINTS.



DISTANCES PLUMB CHAINED

CENTER OF SECTION 8-85-40



DISTANCES PLUMB CHAINED

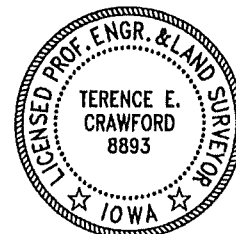
S1/4 CORNER SECTION 8-85-40

I HEREBY CERTIFY THAT THIS LAND SURVEYING DOCUMENT WAS PREPARED  
 AND THE RELATED SURVEY WORK WAS PERFORMED BY ME OR UNDER MY  
 DIRECT PERSONAL SUPERVISION AND THAT I AM A DULY LICENSED LAND  
 SURVEYOR UNDER THE LAWS OF THE STATE OF IOWA.

*Terence E. Crawford* 8-17-23

TERENCE E. CRAWFORD  
 IA LICENSE NO. 8893

DATE  
 EXP. DATE DECEMBER 31, 2023



SE PROJECT NO. 24323  
 DRAWN BY: LLL