

INDEXED             
FOLLOW UP             
PROOFED             
SCANNED           

PREPARED BY: JOHN A. MUNSON III - SUNDQUIST ENGINEERING - 910 SEVENTH STREET, ONAWA, IOWA 51040-PHONE (712)423-3131

**UNITED STATES PUBLIC LAND SURVEY CORNER CERTIFICATE OF**  
LAND SURVEY MONUMENT SITUATED IN SECTION 15, TOWNSHIP 85 NORTH, RANGE 40 WEST  
OF THE FIFTH PRINCIPAL MERIDIAN, CRAWFORD, COUNTY, IOWA.  
PREVIOUSLY RECORDED IN \_\_\_\_\_ IN COUNTY RECORDERS OFFICE.

**MONUMENT DESCRIPTION AND REMARKS**

EAST QUARTER CORNER SECTION 15-85-40

FOUND AXLE 0.20' DEEP.

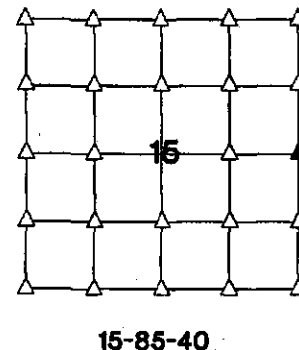
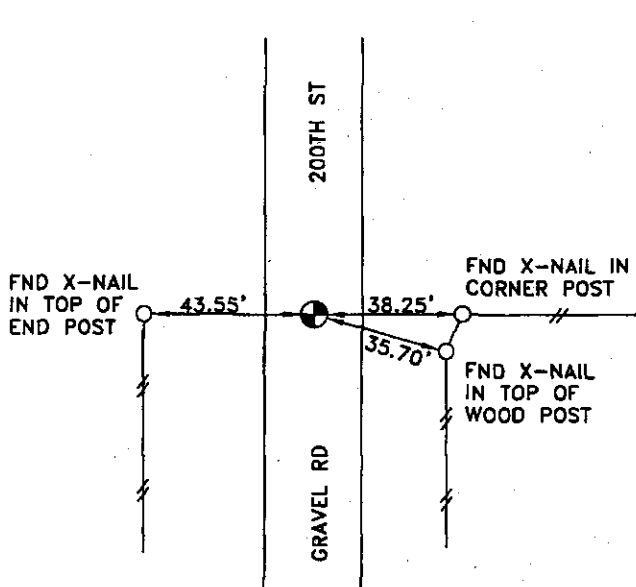
AXLE ON LINE WITH FENCE EAST.

AXLE FITS CENTERLINE OF NORTH/SOUTH GRAVEL ROAD.

L. STUKENHOLTZ & R. ANDERSON

DATE 01-26-09

PLAN VIEW



I HEREBY CERTIFY THAT THIS LAND SURVEYING DOCUMENT AND THE RELATED SURVEY WORK WAS PERFORMED BY ME OR UNDER MY DIRECT PERSONAL SUPERVISION AND THAT I AM A DULY LICENSED LAND SURVEYOR UNDER THE LAWS OF THE STATE OF IOWA.

John A. Munson III 2-4-09  
JOHN A. MUNSON III DATE

IA. LICENSE NO. 11118

EXP. DATE DECEMBER 31, 2010

SE PROJECT NO. 30809T2

DRAWN BY: CSL

