

INDEXED _____
 FOLLOW UP _____
 PROOFED _____
 SCANNED _____

✓
 2197
 2198

Crawford County Recorder
 Denise Meeves

Fee Book 2013-1637

07/12/2013 @ 11:25AM
 PLC PLAT CORNER CER # Pages: 1
 Book: Page: \$7.00
 Total Fees:

PREPARED BY - JAMES C. SAILER - IDOT, P.O.B. 987, SIOUX CITY IOWA 51102-0987 PHONE (712) 276-1451



UNITED STATES PUBLIC LAND SURVEY CORNER CERTIFICATE
 OF

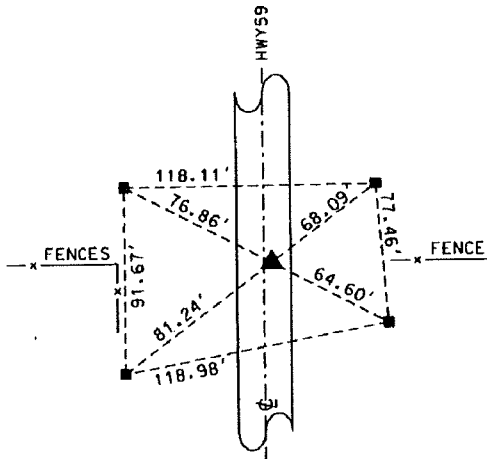
Land Survey Monument Situated in Section 13,
 Township 85 NORTH, Range 40 WEST Of The Fifth Principal Meridian,
 CRAWFORD County, Iowa. Previously Recorded In _____
 In The County Recorders Office.

Monument Description and Remarks:

- ① E 1/4 CORNER SEC 13-85-40. FOUND NOTHING IN ACC. FOUND LEAD PLUG IN PCC. 6" DEEP. SET IDOT
 BRONZE DISK W/ CUT TRIANGLE IN NEW ASPHALT OVERLAY.
 ② NE CORNER SEC 13-85-40. FOUND HINGE NAIL IN ACC. SET IDOT BRONZE DISK W/ CUT TRIANGLE IN NEW
 ASPHALT OVERLAY

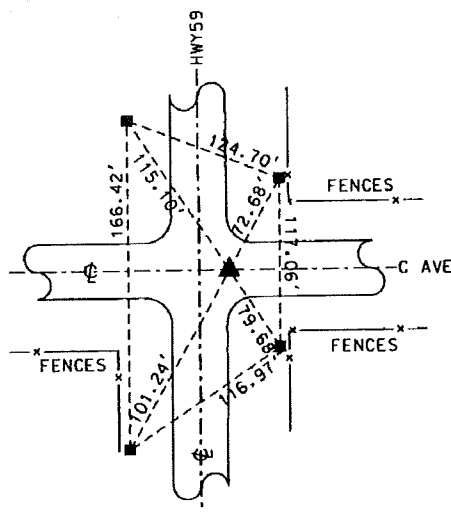
PLAN - VIEW

① E 1/4 CORNER SEC 13-85-40



■ = CONCRETE MONUMENT

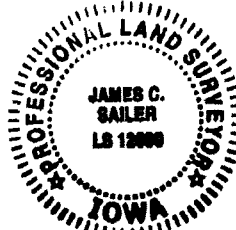
② NE CORNER SEC 13-85-40



■ = CONCRETE MONUMENT

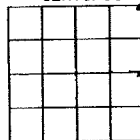
I hereby certify that this land surveying document was prepared and the related survey work was performed by me or under my direct personal supervision and that I am a duly licensed Professional Land Surveyor under the Laws of the State of Iowa.

Signature: James C. Sailer 7/10/13 Date
 James C. Sailer - Lisc. No. 12090



My License Renewal
 Date is December 31, 2014
 Pages or sheets covered by this seal: 1

IOWA DEPARTMENT OF TRANSPORTATION
 CRAWFORD COUNTY FIELD BOOK 1, PAGE 93.96
 CERTIFICATE NUMBER 24-12



DATE: 07/02/2013 BY: COM

Corner to be Indexed

Corner	Section	Twp	Range
E 1/4	13	85	40
NE	13	85	40