

INDEXED
 FOLLOW UP
 PHOTOCOPIED
 S. S. S. S.

Crawford County Recorder
 Denise Heeves
Fee Book 2013-1636
 07/12/2013 011:22AM
 PLC PLAT CORNER CER # Pages: 1
 Book: Page: \$7.00
 Total Fees:

PREPARED BY - JAMES C. SAILER - IDOT, P.O.B. 987, SIOUX CITY IOWA 51102-0987 PHONE (712) 276-1451



UNITED STATES PUBLIC LAND SURVEY CORNER CERTIFICATE
 OF



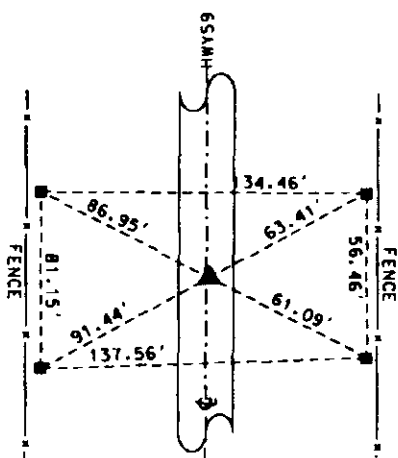
Land Survey Monument Situated in Section 12,
 Township 85 NORTH, Range 40 WEST Of The Fifth Principal Meridian,
 CRAWFORD County, Iowa. Previously Recorded In _____
 In The County Recorders Office.

Monument Description and Remarks:

- ① E 1/4 COR SEC 12-85-40. FOUND HINGE NAIL IN ACC. SET IDOT BRONZE DISK W/ CUT TRIANGLE IN NEW ASPHALT OVERLAY
 ② NE COR SEC 12-85-40. FOUND HINGE NAIL IN ACC. SET IDOT BRONZE DISK W/ CUT TRIANGLE IN NEW ASPHALT OVERLAY

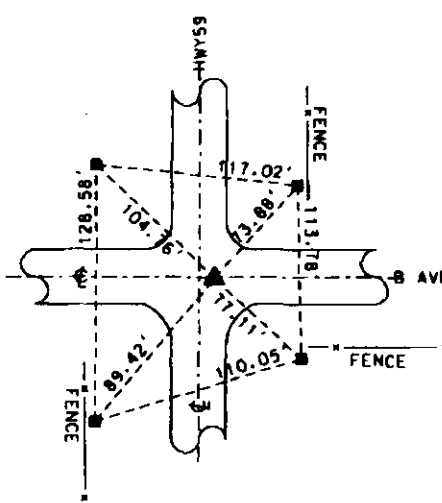
PLAN - VIEW

① E 1/4 COR SEC 12-85-40



■ = CONCRETE MONUMENT

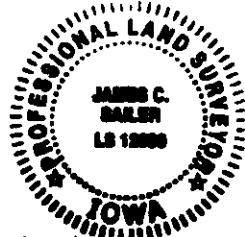
② NE COR SEC 12-85-40



■ = CONCRETE MONUMENT

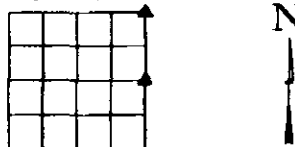
I hereby certify that this land surveying document was prepared and the related survey work was performed by me or under my direct personal supervision and that I am a duly licensed Professional Land Surveyor under the Laws of the State of Iowa.

Signature: James C. Sailer 7/10/13 Date
 James C. Sailer - Lisc. No. 12090



My License Renewal Date is December 31, 2014
 Pages or sheets covered by this seal: _____

IOWA DEPARTMENT OF TRANSPORTATION
 CRAWFORD COUNTY FIELD BOOK 1 - PAGE 98-99
 CERTIFICATE NUMBER 24-13



DATE: 07/02/2013 BY: COH

| Corner | Section | Twp | Range |
|--------|---------|-----|-------|
| E 1/4 | 12 | 85 | 40 |
| NE | 12 | 85 | 40 |