

97 JUL 30 AM 9:45

INST. NO. 97-1823
DENISE NEEVES, RECORDER
Denise Neeves
FEE \$600

This document prepared by: Semke & Associates - 712-792-2276
Michael G. Semke, L.S.#10318 - 608 N. Court St., Carroll, Iowa

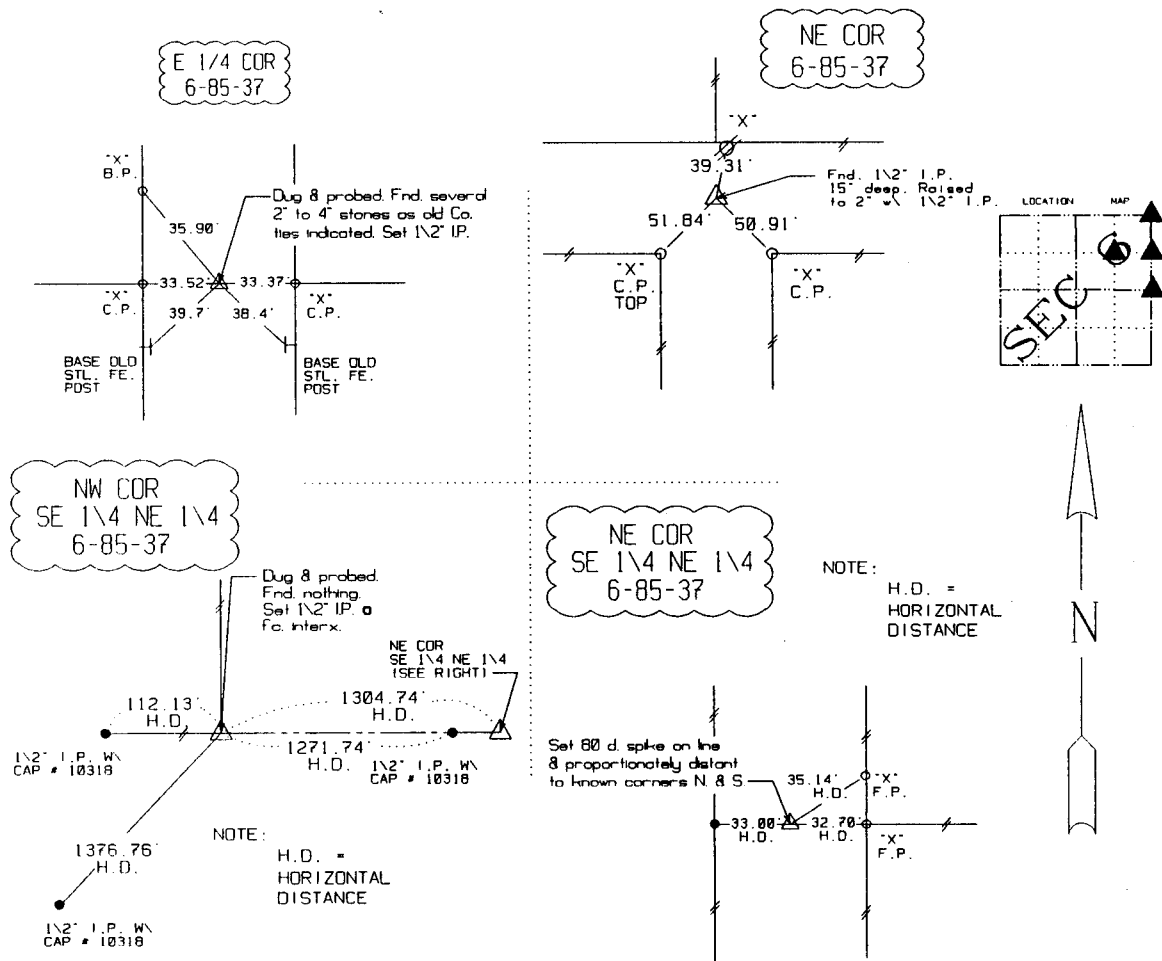
UNITED STATES PUBLIC LAND SURVEY CORNER CERTIFICATE
OF

Land Survey Monuments situated in Section 6, Township 85, Range 37 of the Fifth Principal Meridian, Crawford County, Iowa. Previously recorded in _____ in County Recorder's Office.
(book, page, document number, etc.)

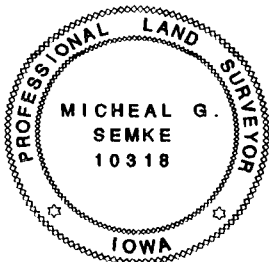
(Show reason for preparing this certificate, the evidence and detailed procedures used in establishing the corner positions and monumentation found or placed.)

PLAN - VIEW

(Show a minimum of three reference ties to durable physical objects, relevant monuments and physical conditions that will enable recovery of the corner.)



Note: All ties slope chained unless noted.



I HEREBY CERTIFY THAT THIS CORNER CERTIFICATE WAS PREPARED BY ME OR UNDER MY DIRECT PERSONAL SUPERVISION AND THAT I AM A PROFESSIONAL LAND SURVEYOR UNDER THE LAWS OF THE STATE OF IOWA. MY REGISTRATION IS SUBJECT TO RENEWAL 12-31-97.

7-7-97
DATE

Michael G. Semke
MICHAEL G. SEMKE, RLS NO 10318

Corners	List Corners to be Indexed		
	Section	Twp	Range
E 1/4	6	85	37
W 1/4	5	85	37
NE COR	6	85	37
NW COR	5	85	37
NE COR			
SE 1/4 NE 1/4	6	85	37
NW COR			
SW 1/4 NW 1/4	5	85	37
NW COR			
SE 1/4 NE 1/4	6	85	37