

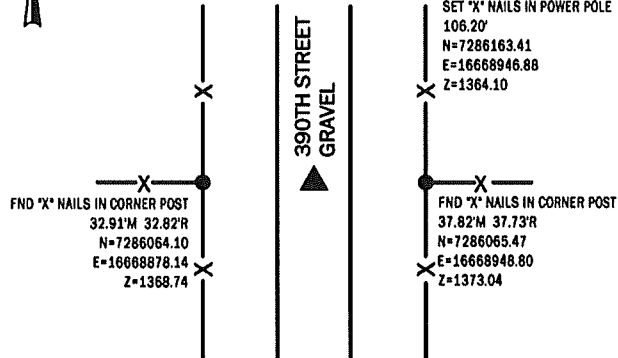
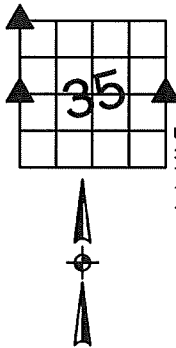
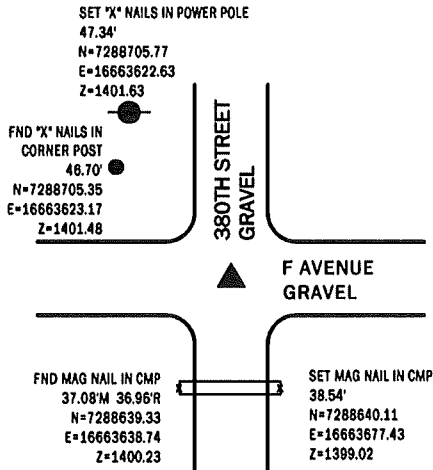
Denise Meeves RECORDER
 Crawford County, Iowa
 Instr. Number: 2022-2899
 Recorded: 12/1/2022 at 11:46:17.0 AM
 Pages 1
 County Recording Fee: \$7.00
 Iowa E-Filing Fee: \$3.13
 Combined Fee: \$10.13
 Revenue Tax:

PREPARED BY AND RETURN TO: MIKE SCHULTE, SCHULTE SURVEYING, INC., 2003 390TH STREET, WESTSIDE, IA 51467 (712) 790-3489

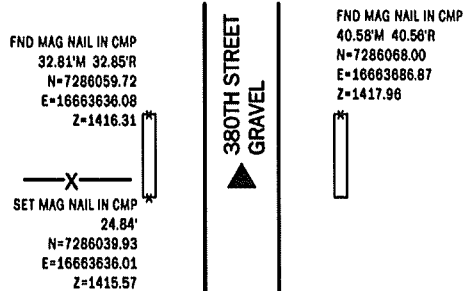
UNITED STATES PUBLIC LAND SURVEY CORNER CERTIFICATE OF
 LAND SURVEY MONUMENTS SITUATED IN SECTION 35, TOWNSHIP 85 NORTH, RANGE 37 WEST, OF THE FIFTH
 PRINCIPAL MERIDIAN, CRAWFORD COUNTY, IOWA. PREVIOUSLY RECORDED IN SEE BELOW IN COUNTY
(book, page instrument number)

NW CORNER
 FND 5/8" REBAR 8" DEEP
 N=7288672.14 E=16663656.00 Z=1402.33
 USED CERTIFICATE RECORDED IN BOOK 2013-1157 TO FIND A
 5/8" REBAR 8" DEEP. VERIFIED WITH 2 REMAINING TIES AND
 ACCEPTED.
 THIS CERTIFICATE IS BEING FILED TO UPDATE THE REFERENCE
 TIES.

E1/4 CORNER
 FND 1/2" REBAR YPC #11804 3" DEEP
 N=7286063.44 E=16668911.04
 USED CERTIFICATE RECORDED IN BOOK 2006-2437 TO FIND A
 1/2" REBAR YPC #11804 3" DEEP. VERIFIED WITH 2 REMAINING
 TIES AND ACCEPTED.
 THIS CERTIFICATE IS BEING FILED TO UPDATE THE REFERENCE
 TIES.



W1/4 CORNER
 FND CONCRETE MONUMENT
 N=7286037.44 E=16663660.17 Z=1414.98
 USED CERTIFICATE RECORDED IN INSTRUMENT #2015-2088 TO
 FIND A CONCRETE MONUMENT. VERIFIED WITH 2 REMAINING TIES
 AND ACCEPTED.
 THIS CERTIFICATE IS BEING FILED TO UPDATE THE REFERENCE TIES.



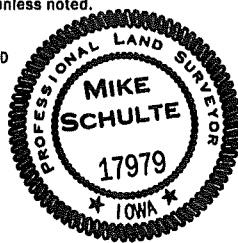
LIST CORNERS TO BE INDEXED

CORNER	SECTION	TWP	RANGE
NW CORNER	35	85	37
NE CORNER	34	85	37
SE CORNER	27	85	37
SW CORNER	26	85	37
W1/4 CORNER	35	85	37
E1/4 CORNER	34	85	37
E1/4 CORNER	35	85	37
W1/4 CORNER	36	85	37

*All distances are measured horizontally unless noted.

I HEREBY CERTIFY THAT THIS LAND SURVEYING DOCUMENT WAS
 PREPARED BY ME OR UNDER MY DIRECT PERSONAL SUPERVISION AND
 THAT I AM A DULY LICENSED PROFESSIONAL LAND SURVEYOR UNDER
 THE LAWS OF THE STATE OF IOWA.

Mike Schulte
 MIKE SCHULTE
 LICENSE NUMBER: 17979
 LICENSE RENEWAL DATE IS DECEMBER 31, 2023
 PAGES COVERED BY THIS SEAL: 1 OF 1



BASIS OF BEARING
 IARCS ZONE 6 - US SURVEY FEET
 IARTRN DERIVED - NAD83(2011) (EPOCH 2010.00)

SCHULTE SURVEYING, INC.

DRAWN BY: MLS/SLG
 PROJ NUMBER: 22-055