

98 APR 24 PM 12: 29

INST. NO. 98-1327
DENISE MEEVES, RECORDER
Denise Meeves
FEE \$6.00

INDEXED
FILED UP
CRAWFORD

This document prepared by: Semke & Associates - 712-792-2276
Michael G. Semke, L.S.#10318 - 608 N. Court St., Carroll, Iowa

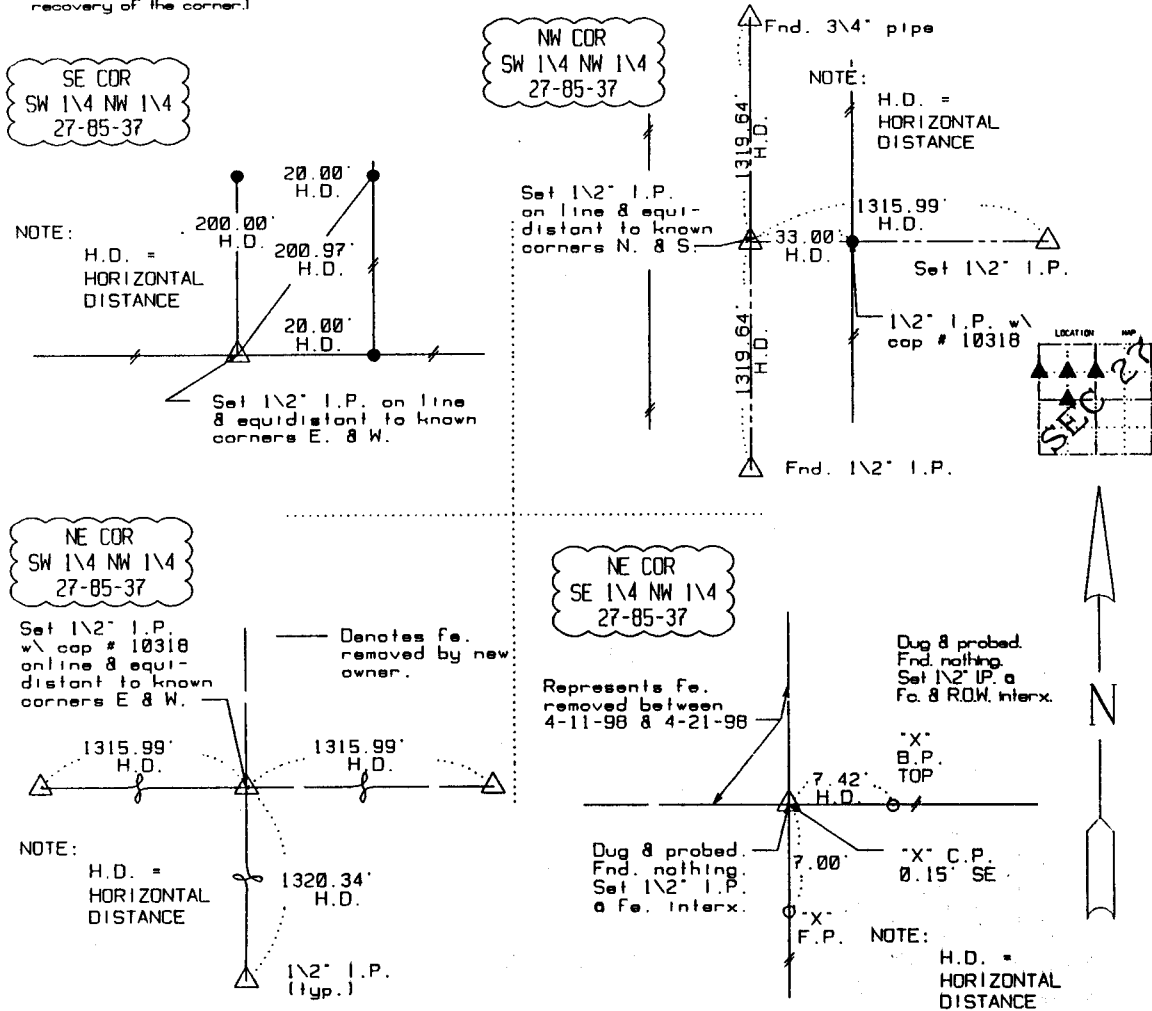
UNITED STATES PUBLIC LAND SURVEY CORNER CERTIFICATE
OF

Land Survey Monuments situated in Section 27, Township 85, Range 37, of the Fifth Principal Meridian, Crawford County, Iowa. Previously recorded in _____ in County Recorder's Office.
(book, page, document number, etc.)

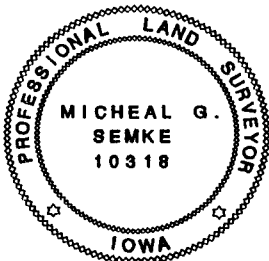
(Show reason for preparing this certificate, the evidence and detailed procedures used in establishing the corner positions and monumentation found or placed.)

PLAN - VIEW

(Show a minimum of three reference ties to durable physical objects, relevant monuments and physical conditions that will enable recovery of the corner.)



Note: All ties slope chained unless noted.



I HEREBY CERTIFY THAT THIS CORNER CERTIFICATE WAS PREPARED BY ME OR UNDER MY DIRECT PERSONAL SUPERVISION AND THAT I AM A PROFESSIONAL LAND SURVEYOR UNDER THE LAWS OF THE STATE OF IOWA. MY REGISTRATION IS SUBJECT TO RENEWAL 12-31-99.

4/23/98
DATE

Michael G. Semke
MICHAEL G. SEMKE, RLS NO 10318

Corners	List Corners to be Indexed		
	Section	Twp	Range
NW COR SW 1/4 NW 1/4	27	85	37
NE COR SE 1/4 NE 1/4	28	85	37
NE COR SW 1/4 NW 1/4	27	85	37
SE COR SW 1/4 NW 1/4	27	85	37
NE COR SE 1/4 NW 1/4	27	85	37