

INDEXED D.M. Geyer
 FOLLOW UP AKG
 PROOFED BM
 SCANNED g

REC011665



Crawford County Recorder Denise Meeves
 FEE BOOK 2006-2433 8/18/2006 @ 11:11AM
 PLC PLAT CORNER CERBook: Page: #: 1
 Total Fees: \$7.00

PREPARED BY & RETURN TO MICHAEL G. GEIER, SNYDER & ASSOCIATES, INC. 2727 SW SNYDER ROAD, ANKENY, IOWA 50023 (888) 964-2020

UNITED STATES PUBLIC LAND SURVEY CORNER CERTIFICATE OF

Land Survey Monuments situated in Section 26, Township 85, Range 37, of the Fifth Principal Meridian, CRAWFORD County, Iowa.
 Previously recorded in N/A in County Recorder's Office.
 (book, page, document number, ect.)

(Show reason for preparing this certificate, the evidence and detailed procedures used in establishing the corner positions and monumentation found or placed.)

Monument Description and Remarks:

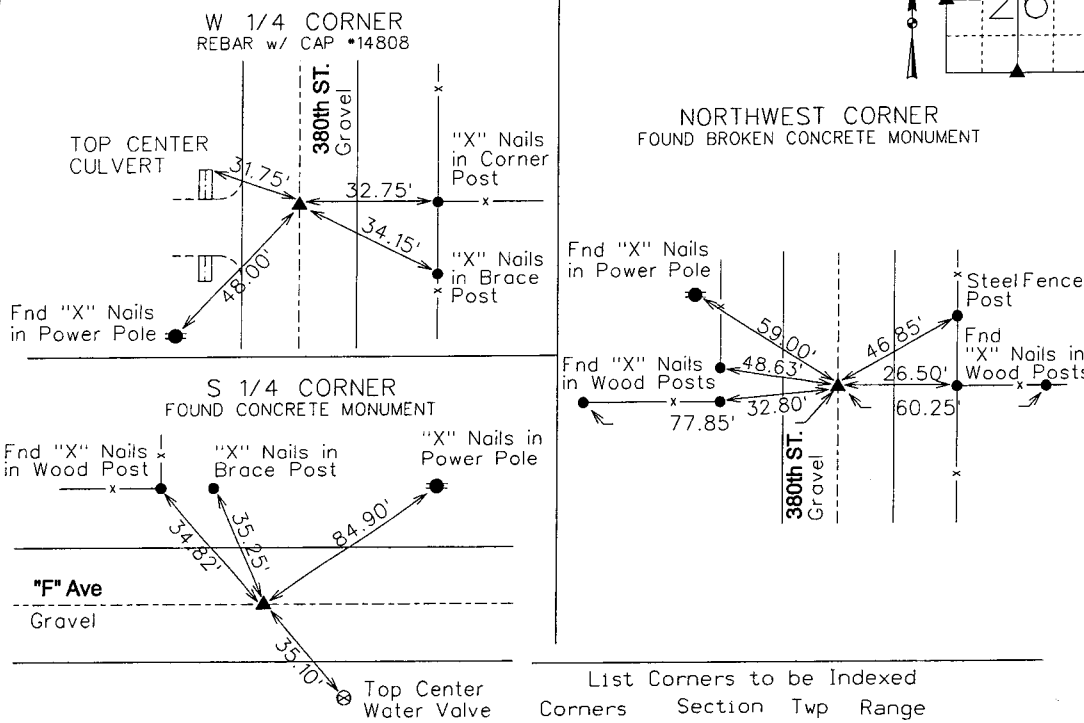
WEST 1/4 CORNER - FOUND 1/2" REBAR WITH CAP #14808 IN CENTERLINE 380th STREET USING COUNTY ENGINEER SECTION CORNER TIES AND RETIED SECTION CORNER.

NORTHWEST CORNER - FOUND BROKEN CONCRETE MONUMENT 380th STREET USING COUNTY ENGINEER SECTION CORNER TIES AND RETIED SECTION CORNER.

SOUTH 1/4 CORNER - FOUND CONCRETE MONUMENT 24" DEEP AND RETIED SECTION CORNER.

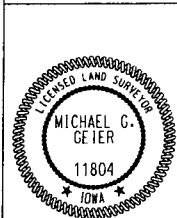
Plan-View

(Show a minimum of three reference ties to durable physical objects, relevant monuments and physical conditions that will enable recovery of the corner.)



List Corners to be Indexed

Corners	Section	Twp	Range
W 1/4 COR	26	85	37
E 1/4 COR	27	85	37
NW COR	26	85	37
NE COR	27	85	37
SE COR	22	85	37
SW COR	23	85	37
S 1/4 COR	26	85	37
N 1/4 COR	35	85	37



I hereby certify that this land surveying document was prepared and the related surveying work was performed by me or under my direct supervision and that I am a duly licensed Land Surveyor under the laws of the State of Iowa.

Michael G. Geier 8-10-06
 Michael G. Geier, PLS Date

License Number: 11804
 My License Renewal Date is December 31, 2007

Pages or sheets covered by this seal:
 SHEET 1 OF 1

TECH: JDP

PN: 85-37-26 (105.1255)

DATE: 04/05/06