

INDEXED DM/eg  
 FOLLOW UP WAC  
 PROOFED DM  
 SCANNED g

REC011664



Crawford County Recorder Denise Meeves  
 FEE BOOK 2006-2432 8/18/2006 @ 11:10AM  
 PIC PLAT CORNER CERBook: Page: #: 1  
 Total Fees: \$7.00

PREPARED BY & RETURN TO MICHAEL G. GEIER, SNYDER & ASSOCIATES, INC. 2727 SW SNYDER ROAD, ANKENY, IOWA 50023 (888) 964-2020

**UNITED STATES PUBLIC LAND SURVEY CORNER CERTIFICATE OF**

Land Survey Monuments situated in Section 25, Township 85, Range 37, of the Fifth Principal Meridian, CRAWFORD County, Iowa.  
 Previously recorded in N/A in County Recorder's Office.  
 (book, page, document number, ect.)

(Show reason for preparing this certificate, the evidence and detailed procedures used in establishing the corner positions and monumentation found or placed.)

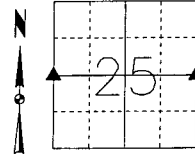
**Monument Description and Remarks:**

EAST 1/4 CORNER - FOUND IRON ROD 6" ± WEST OF C ASPEN AVE AND 1' ± NORTH OF FENCE LINES EAST AND WEST USING EXISTING TIES AND RETIED SECTION CORNER.

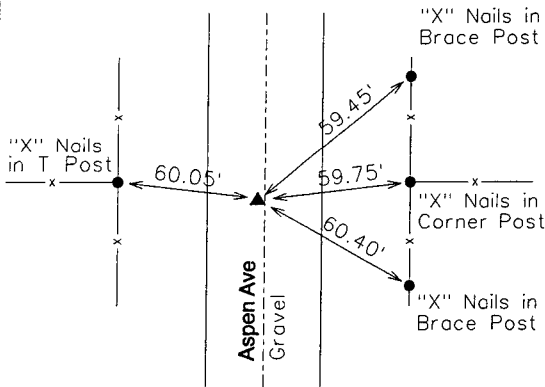
WEST 1/4 CORNER - FOUND CONCRETE MONUMENT C 390TH STREET 20" DEEP.  
 SET 1/2" REBAR CAP \*11804 6" DEEP BELOW GRAVEL SURFACE.

**Plan-View**

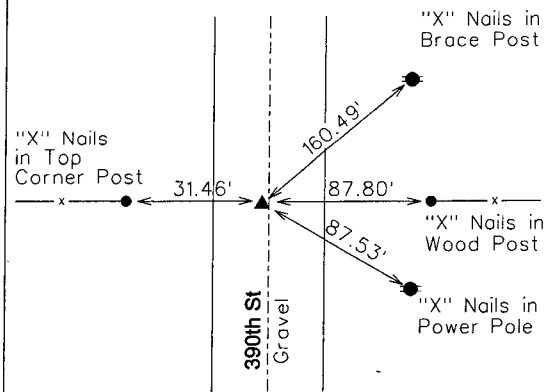
(Show a minimum of three reference ties to durable physical objects, relevant monuments and physical conditions that will enable recovery of the corner.)



**E1/4 CORNER  
 FOUND IRON ROD**



**W1/4 CORNER  
 FOUND CONCRETE MONUMENT**



I hereby certify that this land surveying document was prepared and the related surveying work was performed by me or under my direct supervision and that I am a duly licensed Land Surveyor under the laws of the State of Iowa.  
*Michael G. Geier 8-10-06*  
 Michael G. Geier, PLS Date  
 License Number 11804  
 My License Renewal Date is December 31, 2007  
 Pages or sheets covered by this seal:  
 SHEET 1 OF 1

**List Corners to be Indexed**

Corners	Section	Twp	Range
E 1/4 COR	25	85	37
W 1/4 COR	30	85	36
W 1/4 COR	25	85	37
E 1/4 COR	26	85	37

TECH: JDP

PN: 85-37-25 (105.1255)

DATE: 04/07/06