

INDEXED SM/BM
FOLLOW UP _____
PROCESSED _____
SCANNED _____

This document prepared by : Semke & Associates - 712-792-2276
Micheal G. Semke, L.S. #10318 - 716 N. Crawford St. - Carroll, Iowa

UNITED STATES PUBLIC LAND SURVEY CORNER CERTIFICATE of
Land Survey Monuments situated in Section 15, Township 85 North, Range 37
West of the Fifth Principal Meridian, Crawford County, Iowa.
Previously recorded in Book _____, Page _____ in County Recorder's Office.

(Show reason for preparing this certificate, the evidence and detailed procedures used in establishing the corner positions and monumentation found or placed.)

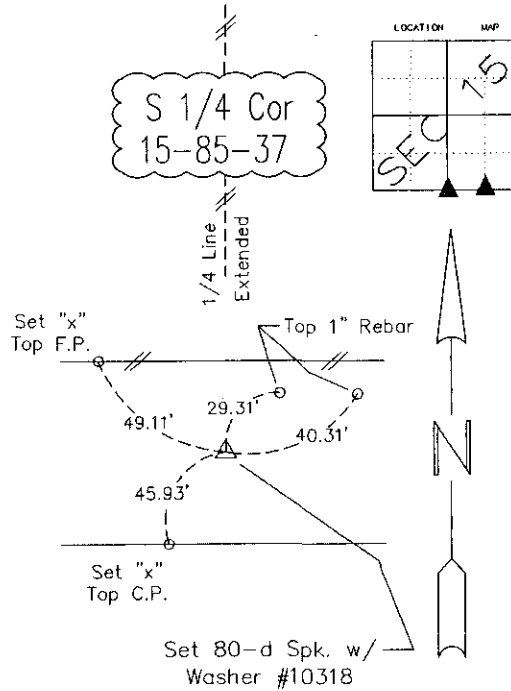
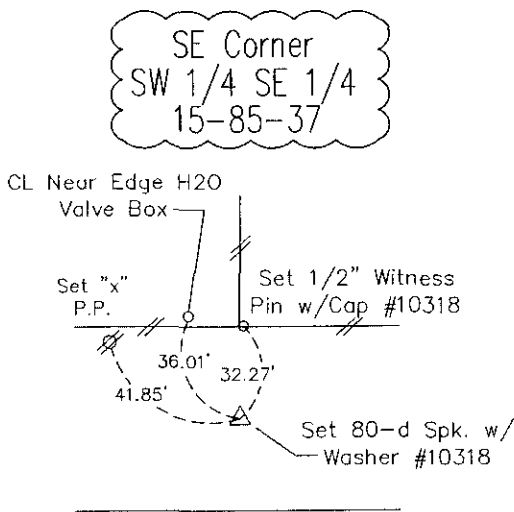
S 1/4 Corner Set 80-d Spike w/Washer No. 10318
@ R.O.W. Split & W. line of SE 1/4

SE Corner Set 80-d Spike w/Washer No. 10318
SW 1/4 SE 1/4 on line & Equidistant to Cor.s E.-W.

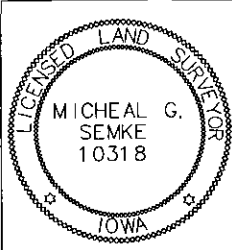
Note: All pins set are 1/2" x 24" Rerod w/Yellow Cap #10318 unless noted otherwise.

PLAN - VIEW

(Show a minimum of three reference ties to durable physical objects, relevant monuments and physical conditions that will enable recovery of the corner.)



Note: All ties Horz. Dist unless noted otherwise - S.D. = Slope Dist.



I HEREBY CERTIFY THAT THIS LAND SURVEYING DOCUMENT WAS PREPARED AND RELATED SURVEY WORK WAS PERFORMED BY ME OR UNDER MY DIRECT PERSONAL SUPERVISION AND THAT I AM A DULY LICENSED LAND SURVEYOR UNDER THE LAWS OF THE STATE OF IOWA

Signature Micheal G. Semke Date 10/18/10

Printed of Typed Name Micheal G. Semke, L.S. No. 10318

List Corners to be Indexed

Corners	Section	Twp	Range
S 1/4 Cor	15	85	37
N 1/4 Cor	22	85	37
SE Cor	15	85	37
SW 1/4 SE 1/4			

Pages or sheets covered by this seal THIS PAGE My license renewal date is 12/31/11.