

INDEX Sm/Dm  
 SCAN Dm  
 FOLLOW UP Sm  
 PROOF Sm

Instrument #: 2022-0701  
 03/15/2022 09:25:51 AM Total Pages: 1  
 PLC PLAT COR CERT  
 Recording Fee: \$0.00 Transfer Tax: \$0  
 Denise Meeves, Recorder, Crawford County Iowa



PREPARED BY: PAUL ASSMAN-CRAWFORD COUNTY ENGINEER'S OFFICE-COURTHOUSE-DENISON, IA.-712-263-2449

## UNITED STATES PUBLIC LAND SURVEY CORNER CERTIFICATE OF

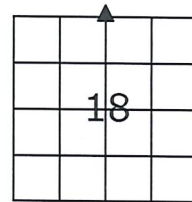
LAND SURVEY MONUMENT SITUATED IN JACKSON TOWNSHIP, NORTH 1/4 CORNER OF SECTION 18, T-85N,  
R-37W OF THE FIFTH P.M. CRAWFORD COUNTY, IOWA.

PREVIOUSLY RECORDED IN JACKSON TWP. FIELD BOOK PG. 54, COUNTY ENGINEER'S OFFICE

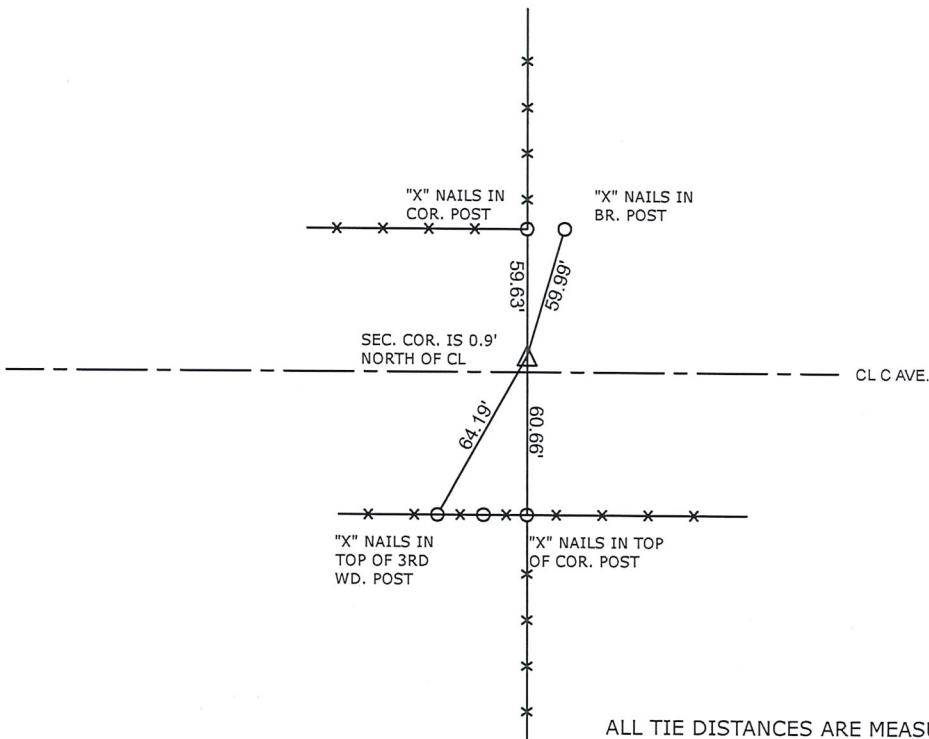
### MONUMENT DESCRIPTION AND REMARKS

NORTH 1/4 CORNER SEC. 18-85-37

FOUND LEAD PLUG  
 COUNTY RESURFACED ROAD AND SET 1/2" X 4" CARRIAGE  
 BOLT 1/4" BELOW SURFACE AND RETIED



NORTH 1/4 CORNER SEC. 18-85-37



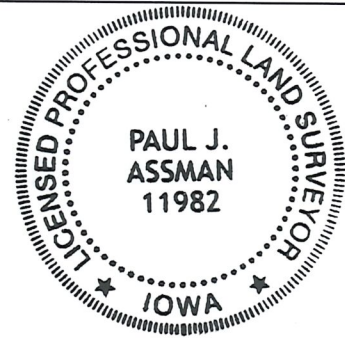
ALL TIE DISTANCES ARE MEASURED HORIZONTALLY USING GPS

**CERTIFICATION:**

I HEREBY CERTIFY THAT THIS LAND SURVEYING DOCUMENT WAS PREPARED AND THE RELATED SURVEY WORK WAS PERFORMED BY ME OR UNDER MY DIRECT PERSONAL SUPERVISION AND THAT I AM A DULY LICENSED LAND SURVEYOR UNDER THE LAWS OF THE STATE OF IOWA.

Paul J. Assman  
 Signature

3/8/22  
 Date of Survey



PAUL J. ASSMAN 11982 12-31-22  
 Typed Name L.S. No. License Renewal Date  
 Pages covered by this seal 1