

11/16 E Cor 17

Found by ties from BR# 4 P# 26+27

1 Large red rock with small rock around same Did not set C.M. as this corner is in creek Will need witness Cor set

Ties from spikes in Cor posts

17.4 W. Cor Post

29.8 WSW. 1st Post E of Cor

26.2 N.E. Center of 3' Willow at S.E

Cor of bridge

21.0 E E Piling of bridge

28.3 Cor post fe. N.

8 N Cor 17

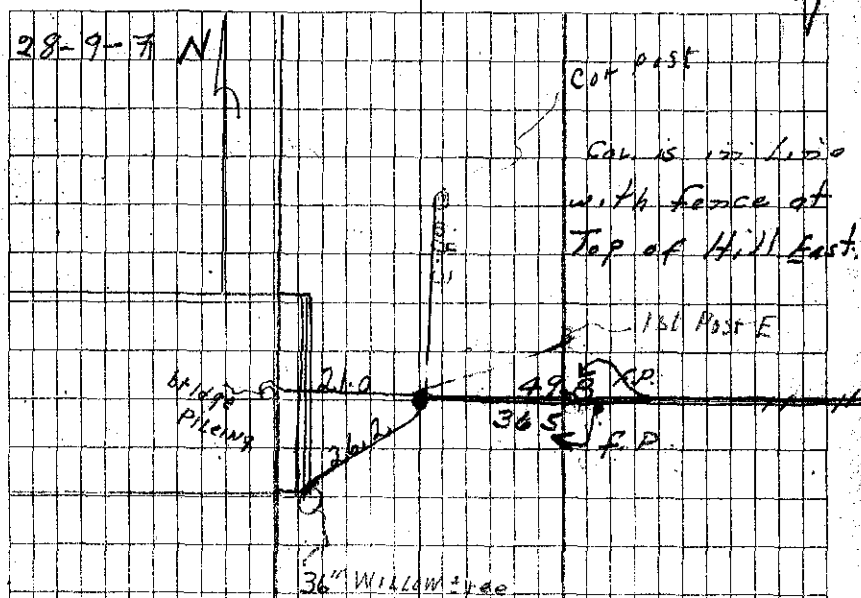
17 Dug 6'x6'x8' hole inline of N fence. No find

Found June 2, 1965  
Westmouth & Catey  
4 Crew

Found 5-22-39

35

28-9-7 N



Cor post

Cor is in line with fence at Top of Hill East.

1st Post E

bridge  
Piling

36" Willow tree

10-23-91  
H. Jones - A. L. Moore  
F. D. Jones  
Notes R. S. Jones

E.D.