

INDEX SM/DM
 SCAN DM
 FOLLOW UP DM
 PROOF DM

Instrument #: 2022-0695
 03/15/2022 09:25:51 AM Total Pages: 1
 PLC PLAT COR CERT
 Recording Fee: \$0.00 Transfer Tax: \$0
 Denise Meeves, Recorder, Crawford County Iowa



PREPARED BY: PAUL ASSMAN-CRAWFORD COUNTY ENGINEER'S OFFICE-COURTHOUSE-DENISON, IA.-712-263-2449

UNITED STATES PUBLIC LAND SURVEY CORNER CERTIFICATE OF

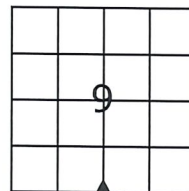
LAND SURVEY MONUMENT SITUATED IN JACKSON TOWNSHIP, SOUTH 1/4 CORNER OF SECTION 9, T-85N,
R-37W OF THE FIFTH P.M. CRAWFORD COUNTY, IOWA.

PREVIOUSLY RECORDED IN JACKSON TWP. FIELD BOOK PG. 33, COUNTY ENGINEER'S OFFICE

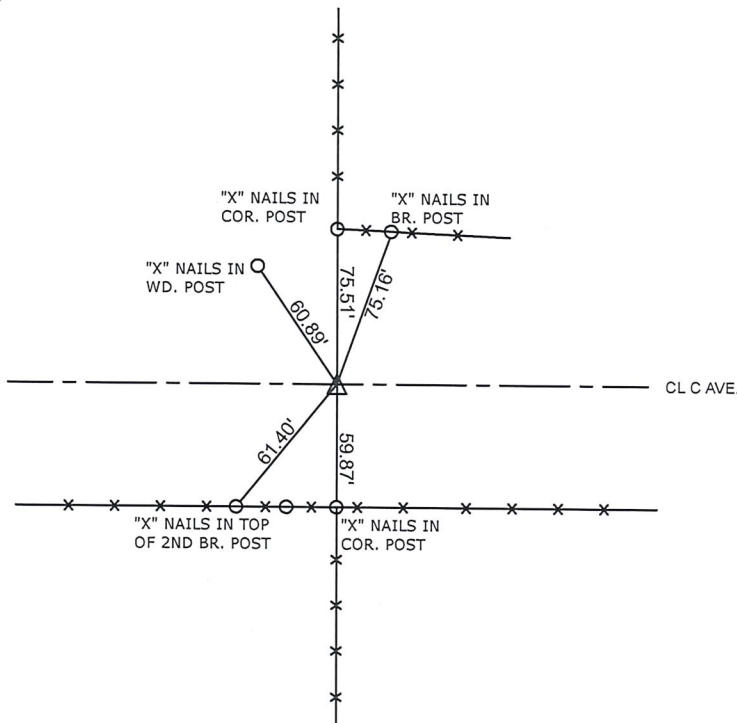
MONUMENT DESCRIPTION AND REMARKS

SOUTH 1/4 CORNER SEC. 9-85-37

FOUND CHISELED "X"
 COUNTY RESURFACED ROAD AND SET 1/2" X 4" CARRIAGE
 BOLT 1/4" BELOW SURFACE AND RETIED




SOUTH 1/4 CORNER SEC. 9-85-37



ALL TIE DISTANCES ARE MEASURED HORIZONTALLY USING GPS

CERTIFICATION:

I HEREBY CERTIFY THAT THIS LAND SURVEYING DOCUMENT WAS PREPARED AND THE RELATED SURVEY WORK WAS PERFORMED BY ME OR UNDER MY DIRECT PERSONAL SUPERVISION AND THAT I AM A DULY LICENSED LAND SURVEYOR UNDER THE LAWS OF THE STATE OF IOWA.


 Signature

3/8/22
 Date of Survey

PAUL J. ASSMAN
 Typed Name

11982
 L.S. No.

12-31-22
 License Renewal Date

Pages covered by this seal 1

