

2003 MAY 14 PM 12:43

INST. NO. 2003-1835
DENISE MEEVES, RECORDER
Denise Meeves
FEF 6.00

FILED BY *DM*
FILED IN *ME*
PROOFED

PREPARED BY: J. SCOTT SHEVEL L.S., KUEHL AND PAYER LTD., 423 WEST MAIN ST., SAC CITY, IA 50583 PH. (712)662-7859

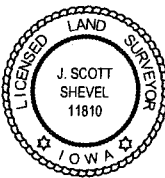
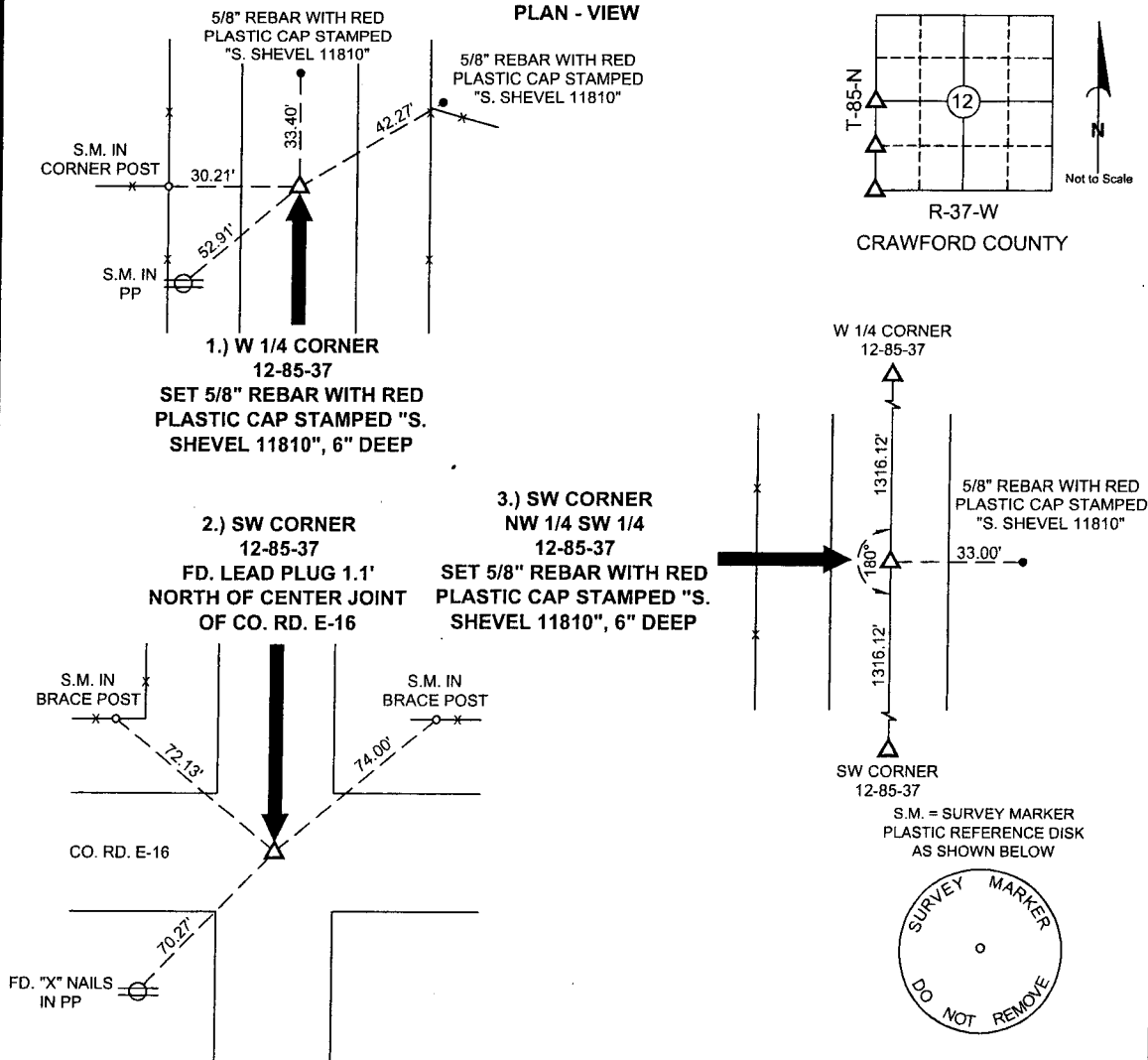
UNITED STATES PUBLIC LAND SURVEY CORNER CERTIFICATE
OF

LAND SURVEY MONUMENTS SITUATED IN SECTION 12, TOWNSHIP 85 NORTH,
RANGE 37 WEST, OF THE 5TH PRINCIPAL MERIDIAN, CRAWFORD COUNTY, IOWA.
PREVIOUSLY RECORDED IN BOOK _____ PAGE _____

MONUMENT DESCRIPTION AND REMARKS:

- 1.) W 1/4 CORNER 12-85-37: CO. ENGINEER TIES STATED A LARGE HOLE HAD BEEN DUG AND NOTHING FOUND; SEARCHED AND FOUND NOTHING; USED FENCE LINE EVIDENCE TO SET 5/8" REBAR WITH RED PLASTIC CAP STAMPED "S. SHEVEL 11810", 6" DEEP
- 2.) SW CORNER 12-85-37: FOUND LEAD PLUG 1.1' NORTH OF CENTER JOINT OF COUNTY ROAD E-16
- 3.) SW CORNER NW 1/4 SW 1/4 12-85-37: SET 5/8" REBAR WITH RED PLASTIC CAP STAMPED "S. SHEVEL 11810", 6" DEEP, EQUIDISTANT ON A LINE BETWEEN THE W 1/4 CORNER AND SW CORNER

PLAN - VIEW



I hereby certify that this land surveying document was prepared and the related survey work was performed by me or under my direct personal supervision and that I am a duly licensed Land Surveyor under the laws of the State of Iowa.

J. Scott Shevel 5/12/03
Date: _____
J. Scott Shevel
License Number 11810
My license renewal date is December 31, 2003
Pages covered by this seal 1

List Corners to be Indexed

Corners	Section	Township	Range
1) W 1/4	12	85	37
2) SW	12	85	37
3) SW NW 1/4 SW 1/4	12	85	37

PN: 030541
DRAWN: JMK