

Found 10-3-39

10/11

Found wood Stake 18" Long 1/2" x 1/2" x 1/2"  
at a depth 5' Lowered and set C.M.

Lies from X SPIKES in Cor Posts

46.1 N.E. from power Pole

32.7 W. . . . Cor Post

37.1 N.E. from gate Post

34.3 E from Cor Post

32.5 S.W. from Hydrant

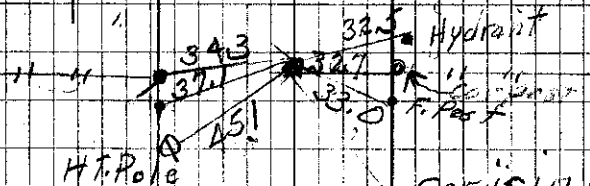
C.M. is 4 1/2' Below Road Surface  
with hub and 1/2" Iron pipe 2.0' long  
to surface

3 N Cor 10  
10

Dug 32" x 6' x 18" hole in line with N'S  
fences NO find

14-56-3

N



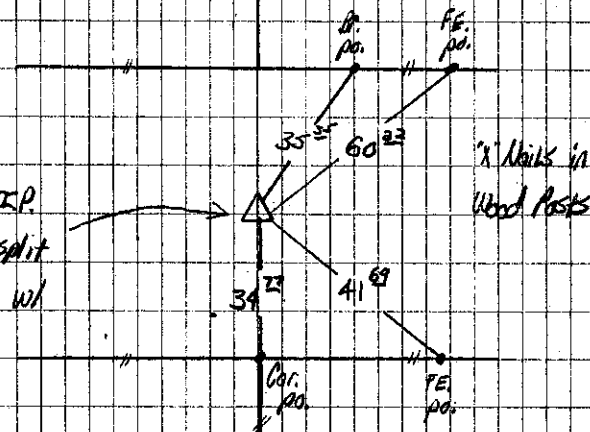
OK Nov. 8, 1949

OK Apr. 17, 1951

92-1-5  
12-555

Dug 10-3-39

Set 1/2" I.P.  
@ ROW split  
& in line with  
Fe. N. E. S.



A-15-94 Tied from  
Sec. Cor. Cert.

E.V.