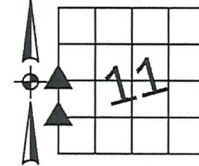


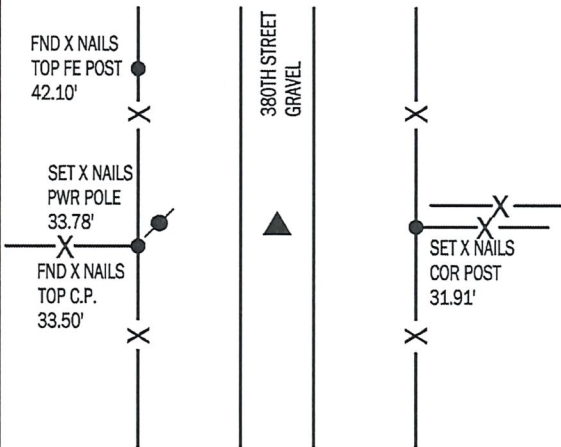
Denise Meeves RECORDER  
 Crawford County, Iowa  
 Instr. Number: 2019-0422  
 Recorded: 3/12/2019 at 3:28:44.0 PM  
 Pages 1  
 County Recording Fee: \$7.00  
 Iowa E-Filing Fee: \$3.13  
 Combined Fee: \$10.13  
 Revenue Tax:

PREPARED BY AND RETURN TO: MIKE SCHULTE, SCHULTE SURVEYING, INC., 2003 390TH STREET, WESTSIDE, IA 51467 (712) 790-3489

**UNITED STATES PUBLIC LAND SURVEY CORNER CERTIFICATE OF**  
 LAND SURVEY MONUMENTS SITUATED IN SECTION 11, TOWNSHIP 85 NORTH, RANGE 37 WEST, OF THE FIFTH  
 PRINCIPAL MERIDIAN, CRAWFORD COUNTY, IOWA. PREVIOUSLY RECORDED IN SEE BELOW IN COUNTY  
 RECORDER'S OFFICE. (book, page instrument number)



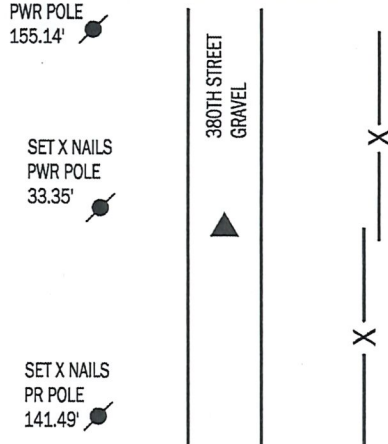
**W1/4 CORNER**  
 FND 1 1/2" PIPE 6" DEEP  
 NORTHING 7307107.57 EASTING 16663523.22



USED TIES RECORDED IN 2004-2363 TO FIND 1 1/2" PIPE 6" DEEP.  
 POWER POLE HAS BEEN CHANGED SO NEW REFERENCES HAVE BEEN  
 ADDED.

**SW CORNER NW1/4 SW1/4**  
 SET 5/8" REBAR WITH YPC 17979 4" DEEP

NORTHING 7305789.03 EASTING 16663525.97



NO RECORD OF CORNER BEING SET WAS FOUND. USED THE  
 W1/4 CORNER AND THE SW CORNER AND SET 5/8" REBAR WITH  
 YPC 17979 4" DEEP BY SINGLE PROPORTION.

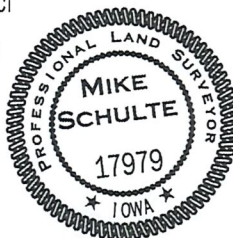
\*All distances are measured horizontally unless noted.

**LIST CORNERS TO BE INDEXED**

CORNER	SECTION	TWP	RANGE
SW COR NW SW	11	85	37
W 1/4 COR	11	85	37
E 1/4 COR	10	85	37
SE COR NE SE	10	85	37

I HEREBY CERTIFY THAT THIS LAND SURVEYING  
 DOCUMENT WAS PREPARED BY ME OR UNDER MY DIRECT  
 PERSONAL SUPERVISION AND THAT I AM A DULY  
 LICENSED PROFESSIONAL LAND SURVEYOR UNDER THE  
 LAWS OF THE STATE OF IOWA.

*Mike Schulte*  
 MIKE SCHULTE  
 2019/03/12  
 DATE  
 LICENSE NUMBER: 17979  
 LICENSE RENEWAL DATE IS DECEMBER 31, 2019  
 PAGES COVERED BY THIS SEAL: 1 OF 1



**BASIS OF BEARING**  
 IaRCS ZONE 6 - US SURVEY FEET  
 IaRTN DERIVED - NAD83(2011)(EPOCH 2010.00)

**SCHULTE SURVEYING, INC.**

DRAWN BY: MLS  
 PROJ NUMBER: 18-061