

INDEXED RM/ly  
 FOLLOW UP RM/ly  
 PROOFED RM  
 SCANNED g

REC011632



Crawford County Recorder Denise Meeves  
 FEE BOOK 2006-2400 8/18/2006 @ 10:37AM  
 PLC PLAT CORNER CERBook: Page: #: 1  
 Total Fees: \$7.00

PREPARED BY & RETURN TO MICHAEL G. GEIER, SNYDER & ASSOCIATES, INC. 2727 SW SNYDER ROAD, ANKENY, IOWA 50023 (888) 964-2020

### UNITED STATES PUBLIC LAND SURVEY CORNER CERTIFICATE OF

Land Survey Monuments situated in Section 9, Township 83, Range 37, of the Fifth Principal Meridian, CRAWFORD County, Iowa.  
 Previously recorded in N/A in County Recorder's Office.  
 (book, page, document number, ect.)

(Show reason for preparing this certificate, the evidence and detailed procedures used in establishing the corner positions and monumentation found or placed.)

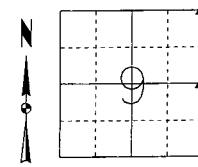
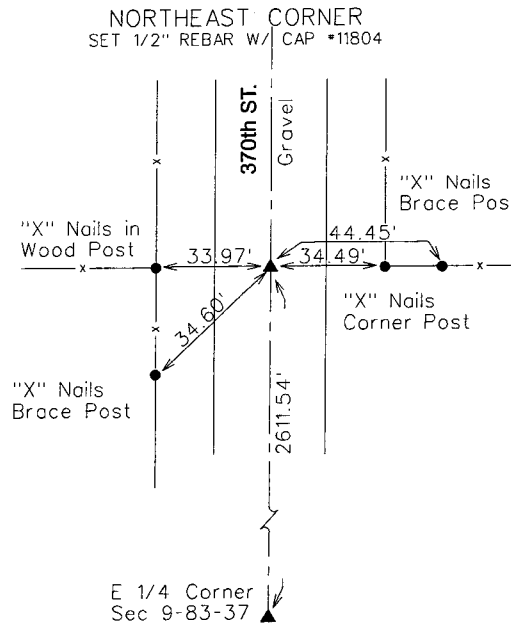
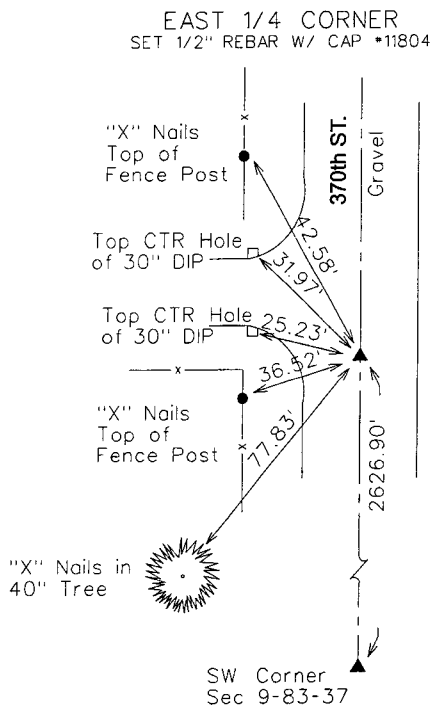
Monument Description and Remarks:

EAST 1/4 CORNER - SET 1/2" REBAR CAP \*11804 USING CRAWFORD COUNTY GRADING PLANS WITH PROJECT NO. SN-2627, COUNTY ENGINEER TIES AND EXISTING FEATURES TO ESTABLISH SECTION CORNER.

NORTHEAST CORNER - SET 1/2" REBAR CAP \*11804 USING CRAWFORD COUNTY GRADING PLANS WITH PROJECT NO. SN-2627, COUNTY ENGINEER TIES AND EXISTING FEATURES TO ESTABLISH SECTION CORNER.

Plan-View

(Show a minimum of three reference ties to durable physical objects, relevant monuments and physical conditions that will enable recovery of the corner.)



I hereby certify that this land surveying document was prepared and the related surveying work was performed by me or under my direct supervision and that I am a duly licensed Land Surveyor under the laws of the State of Iowa.

*Michael G. Geier* 8-10-06  
 Michael G. Geier, PLS Date  
 License Number 11804  
 My License Renewal Date is December 31, 2007  
 Pages or sheets covered by this seal:  
 SHEET 1 OF 1



List Corners to be Indexed

Corners	Section	Twp	Range
E1/4 COR	9	83	37
W1/4 COR	10	83	37
NE COR	9	83	37
NW COR	10	83	37
SW COR	3	83	37
SE COR	4	83	37

TECH: SLW      PN: 83-37-09 (105.1255)      DATE: 04/12/06