

FOLLOW UP  
 PROOFED  
 SCANNED



Crawford County Recorder Denise Meeves  
 Fee Book 2007-1331 REC014514  
 05/17/2007 @0258PM # Pages 1  
 PLC PLAT CORNER CER  
 Total Fees: \$7.00

PREPARED BY AND RETURN TO: JEFFREY M. KRUEGER P.L.S., KUEHL AND PAYER LTD., 2002 WEST MAIN ST., SAC CITY, IA 50583 PH. (712)662-7859

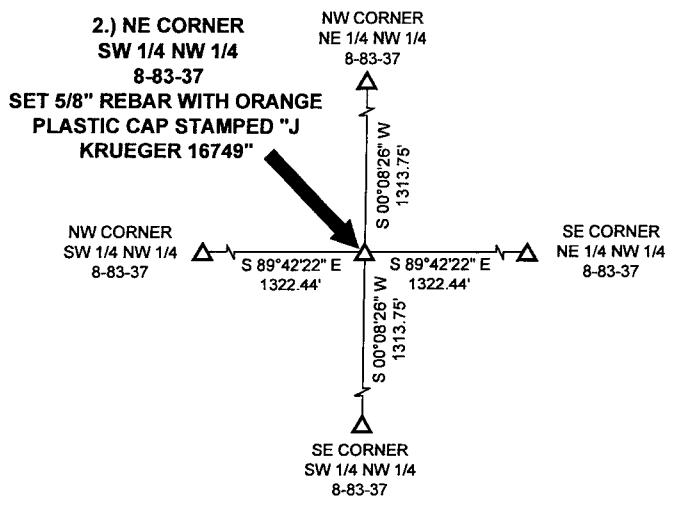
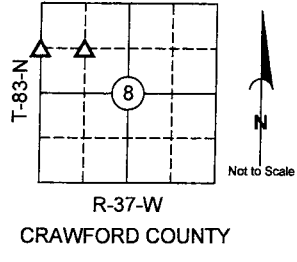
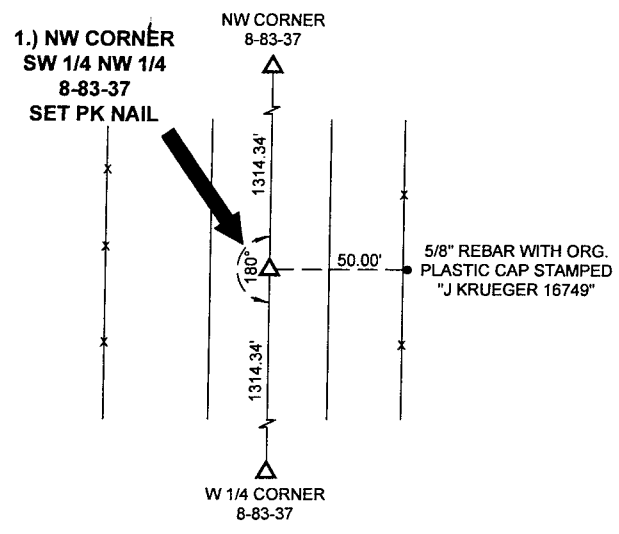
**UNITED STATES PUBLIC LAND SURVEY CORNER CERTIFICATE**  
**OF**

LAND SURVEY MONUMENTS SITUATED IN SECTION 8, TOWNSHIP 83 NORTH,  
 RANGE 37 WEST, OF THE 5TH PRINCIPAL MERIDIAN, CRAWFORD COUNTY, IOWA.  
 PREVIOUSLY RECORDED IN BOOK \_\_\_\_\_ PAGE

**MONUMENT DESCRIPTION AND REMARKS:**

- 1.) NW CORNER SW 1/4 NW 1/4 8-83-37: SET PK NAIL EQUIDISTANT & ON LINE BETWEEN NW CORNER & W 1/4 CORNER
- 2.) NE CORNER SW 1/4 NW 1/4 8-83-37: SET 5/8" REBAR WITH ORANGE PLASTIC CAP STAMPED "J KRUEGER 16749" AT THEORETICAL CENTER OF NW 1/4 PER B.L.M. METHODS

**PLAN - VIEW**



I hereby certify that this land surveying document was prepared and the related survey work was performed by me or under my direct personal supervision and that I am a duly licensed Land Surveyor under the laws of the State of Iowa.

*Jeffrey M. Krueger* Date: 5-4-2007  
 Jeffrey M. Krueger  
 License Number 16749  
 My license renewal date is December 31, 2008  
 Pages covered by this seal: \_\_\_\_\_

**List Corners to be Indexed**

| Corners                    | Section | Township | Range |
|----------------------------|---------|----------|-------|
| 1) NW CORNER SW 1/4 NW 1/4 | 8       | 83       | 37    |
| 2) NE CORNER SW 1/4 NW 1/4 | 8       | 83       | 37    |

PN: 070536  
 DRAWN: JMM