



Crawford County Recorder Denise Meeves  
 Fee Book 2007-1332 REC014515  
 05/17/2007 80259PM # Pages 1  
 PLC PLAT CORNER CER  
 Total Fees: \$7.00

PREPARED BY AND RETURN TO: JEFFREY M. KRUEGER P.L.S., KUEHL AND PAYER LTD., 2002 WEST MAIN ST., SAC CITY, IA 50583 PH. (712)662-7859

**UNITED STATES PUBLIC LAND SURVEY CORNER CERTIFICATE  
 OF**

LAND SURVEY MONUMENTS SITUATED IN SECTION 8, TOWNSHIP 83 NORTH,  
 RANGE 37 WEST, OF THE 5TH PRINCIPAL MERIDIAN, CRAWFORD COUNTY, IOWA.

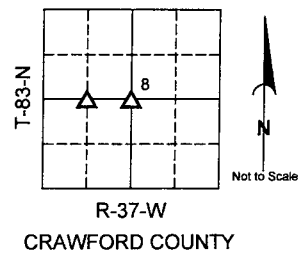
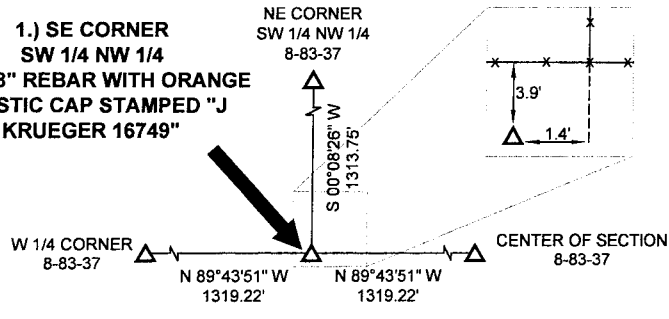
PREVIOUSLY RECORDED IN BOOK \_\_\_\_\_ PAGE \_\_\_\_\_

**MONUMENT DESCRIPTION AND REMARKS:**

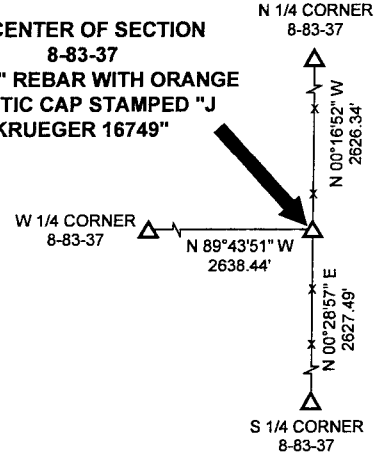
- 1.) SE CORNER SW 1/4 NW 1/4 8-83-37: SET 5/8" REBAR WITH ORANGE PLASTIC CAP STAMPED "J KRUEGER 16749" EQUIDISTANT & ONLINE BETWEEN W 1/4 CORNER & CENTER OF SECTION
- 2.) CENTER OF SECTION 8-83-37: USED EXISTING FENCELINE AS BEST EVIDENCE TO SET 5/8" REBAR WITH ORANGE PLASTIC CAP STAMPED "J KRUEGER 16749"

**PLAN - VIEW**

**1.) SE CORNER  
 SW 1/4 NW 1/4  
 SET 5/8" REBAR WITH ORANGE  
 PLASTIC CAP STAMPED "J  
 KRUEGER 16749"**



**2.) CENTER OF SECTION  
 8-83-37  
 SET 5/8" REBAR WITH ORANGE  
 PLASTIC CAP STAMPED "J  
 KRUEGER 16749"**



I hereby certify that this land surveying document was prepared and the related survey work was performed by me or under my direct personal supervision and that I am a duly licensed Land Surveyor under the laws of the State of Iowa.

*Jeffrey M. Krueger*  
 Jeffrey M. Krueger  
 License Number 16749  
 My license renewal date is December 31, 2008  
 Pages covered by this seal: 1

Date: 5-4-2007

**List Corners to be Indexed**

Corners	Section	Township	Range
1) SE CORNER SW 1/4 NW 1/4	8	83	37
2) CENTER	8	83	37

PN: 070536  
 DRAWN: JMM